



3 0620 00365832 4

1. The first part of the document is a list of names and titles, including "The Metropolitan Museum of Art" and "The Department of Anthropology".

2. The second part of the document is a list of names and titles, including "The Metropolitan Museum of Art" and "The Department of Anthropology".

3. The third part of the document is a list of names and titles, including "The Metropolitan Museum of Art" and "The Department of Anthropology".

4. The fourth part of the document is a list of names and titles, including "The Metropolitan Museum of Art" and "The Department of Anthropology".

5. The fifth part of the document is a list of names and titles, including "The Metropolitan Museum of Art" and "The Department of Anthropology".

6. The sixth part of the document is a list of names and titles, including "The Metropolitan Museum of Art" and "The Department of Anthropology".

7. The seventh part of the document is a list of names and titles, including "The Metropolitan Museum of Art" and "The Department of Anthropology".

8. The eighth part of the document is a list of names and titles, including "The Metropolitan Museum of Art" and "The Department of Anthropology".

9. The ninth part of the document is a list of names and titles, including "The Metropolitan Museum of Art" and "The Department of Anthropology".

10. The tenth part of the document is a list of names and titles, including "The Metropolitan Museum of Art" and "The Department of Anthropology".

119.8

PO1  
1938<sup>3</sup>

THE METROPOLITAN MUSEUM  
OF ART

THE LIBRARY



PRESENTED BY

*American Art Association - Anderson Galleries*

89144





SALE NUMBER 4390  
PUBLIC EXHIBITION FROM SATURDAY, APRIL SIXTEENTH  
[WEEKDAYS 9-6 P. M. / SUNDAY 2-5 P. M.]

AMERICAN, ENGLISH, &  
CONTINENTAL FURNITURE

IMPORTANT TAPESTRIES / ORIENTAL RUGS  
GEORGIAN SILVER & SHEFFIELD PLATE  
PORCELAINS / DECORATIVE OBJECTS

COLLECTED BY THE LATE  
MUSA BENCE LIGGETT

SOLD BY ORDER OF  
LOUIS K. LIGGETT  
" "  
CHESTNUT HILL, BOSTON, MASS.

TOGETHER WITH  
PROPERTY OF OTHER OWNERS

SOLD BY THEIR ORDER

TO BE SOLD BY AUCTION  
FRIDAY & SATURDAY AFTERNOONS  
APRIL TWENTY-SECOND & TWENTY-THIRD  
AT TWO O'CLOCK

AMERICAN ART ASSOCIATION  
ANDERSON GALLERIES · INC

[MITCHELL KENNERLEY, PRESIDENT]  
30 EAST 57TH STREET · NEW YORK

1938

## PRICED CATALOGUES

A priced copy of this catalogue may be  
obtained for one dollar for each  
session of the sale

## CONDITIONS OF SALE

The property listed in this catalogue will be offered and sold subject to the following terms and conditions:

1. The word "Company", wherever used in these Conditions of Sale, means the American Art Association-Anderson Galleries, Inc.
2. The Company has exercised reasonable care to catalogue and describe correctly the property to be sold, but it does not warrant the correctness of description, genuineness, authenticity or condition of said property.
3. All bids are to be *PER LOT* as numbered in the catalogue, unless otherwise announced by the auctioneer at the time of sale.
4. The highest bidder accepted by the auctioneer shall be the buyer. In the event of any dispute between bidders, the auctioneer may, in his discretion, determine who is the successful bidder, and his decision shall be final; or the auctioneer may reoffer and resell the article in dispute.
5. Any bid which is not commensurate with the value of the article offered, or which is merely a nominal or fractional advance over the previous bid, may be rejected by the auctioneer, in his discretion, if in his judgment such bid would be likely to affect the sale injuriously.
6. The name and address of the buyer of each article, or lot, shall be given to the Company immediately following the sale thereof, and payment of the whole purchase price, or such part thereof as the Company may require, shall be immediately made by the purchaser thereof. If the foregoing condition, or any other applicable condition herein, is not complied with, the sale may, at the option of the Company, be cancelled, and the article, or lot, reoffered for sale.
7. Unless the sale is advertised and announced as an unrestricted sale, or a sale without reserve, consignors reserve the right to bid.
8. Except as herein otherwise provided, title will pass to the highest bidder upon the fall of the auctioneer's hammer, and thereafter the property is at the purchaser's sole risk and responsibility.
9. Articles sold and not paid for in full and not taken by noon of the day following the sale may be turned over by the Company to a carrier to be delivered to a storehouse for the account and risk of the purchaser, and at his cost. If the purchase price has not been so paid in full, the Company may either cancel the sale, and any

partial payment already made shall thereupon be forfeited as liquidated damages, or it may resell the same, without notice to the buyer and for his account and risk, and hold him responsible for any deficiency.

10. If for any cause whatsoever any article sold cannot be delivered, or cannot be delivered in as good condition as the same may have been at the time of sale, the sale will be cancelled, and any amount that may have been paid on account of the sale will be returned to the purchaser.

11. In addition to the purchase price, the buyer will be required to pay the New York City sales tax, unless the buyer is exempt from the payment thereof.

12. The Company, subject to these Conditions of Sale and to such terms and conditions as it may prescribe, but without charge for its services, will undertake to make bids for responsible parties approved by it. Requests for such bidding must be given with such clearness as to leave no room for misunderstanding as to the amount to be bid and must state the catalogue number of the item and the name or title of the article to be bid on. The Company reserves the right to decline to undertake to make such bids.

13. The Company will facilitate the employment of carriers and packers by purchasers but will not be responsible for the acts of such carriers or packers in any respect whatsoever.

14. These Conditions of Sale cannot be altered except in writing by the Company or by public announcement by the auctioneer at the time of sale.

SALES CONDUCTED BY MR. A. N. BADE AND MR. E. HAROLD THOMPSON

AMERICAN ART ASSOCIATION  
ANDERSON GALLERIES • INC

30 EAST 57TH STREET • NEW YORK

Telephone PLAZA 3-1269

Cable ARTGAL or ANDAUCTION

MITCHELL KENNERLEY • *President* MILTON B. LOGAN • *Secretary and Treasurer*



## ORDER OF SALE

### FRIDAY AFTERNOON, APRIL TWENTY-SECOND

Glassware	1- 7
Worcester, Meissen, and Limoges Table Porcelains	8- 34
English Gilded Silver, Sterling Silver, and Sheffield Plate	35- 87
Furniture and Decorative Objects, including a Steinway Parlor Grand Piano	88-190
Oriental and Hooked Rugs	191-200
Decorative Objects	201-212

### SATURDAY AFTERNOON, APRIL TWENTY-THIRD

Decorative and Table Glassware and Porcelains	213-258
Georgian Silver, including Gilded Silver by Paul Storr and Benjamin Smith; Flatware and Sheffield Plate	259-310
Oil Paintings	311-318
American, English, and Continental Furniture of the Eighteenth and Nineteenth Centuries	319-394
Flemish, Brussels, Aubusson, and Oudenaarde Tapestries; Oriental Rugs	395-406
Porcelain, Bronze, and Other Decorative Objects	407-415



FIRST SESSION

NUMBERS 1-212

GLASSWARE

NUMBERS 1-7

25-  
1 **TWELVE RUBY GLASS GOBLETS, FINGER BOWLS  
AND NUT DISHES**

Decorated with grape and vine meanders. (*Musa Bence  
Liggett*)

12<sup>50</sup>  
2 **SET OF RUBY GLASS STEMWARE AND  
EIGHTEEN PLATES**

Comprising twenty sherbets, eight goblets, and eighteen  
plates; together with thirteen claret glasses having ruby  
bowls with gold borders and clear glass stems. (*Musa Bence  
Liggett*)

12<sup>50</sup>  
3 **ELEVEN GOLD-DECORATED FRUIT COCKTAIL  
GLASSES WITH LINERS**

Bowls and base enriched with grape and vine pattern in gold.  
Together with a gold-banded hors d'oeuvres dish. (*Musa  
Bence Liggett*) *Height, 8¾ inches*

17<sup>50</sup>  
4 **PAIR AMBER GLASS COVERED CANDY JARS  
AND TWO ROYAL BLUE GOBLETS**

Paneled and cut bodies; one blue goblet with floral medallion,  
covered goblet with cameo reserve. (*Musa Bence Liggett*)

5 **TWENTY-TWO ETCHED WINE GLASSES  
AND TWELVE BRANDY BALLOONS**

Green bowls upon clear stems; inhalers of clear glass. (*Musa Bence Liggett*)

17<sup>50</sup>

6 **PAIR BRISTOL OPAL GLASS GOLD-DECORATED  
COMPOTES**

CIRCA 1820

Bowl and stem decorated with multicolored floral sprays and blossoms. (*Musa Bence Liggett*)

Height, 9½ inches

42<sup>50</sup>

7 **SET OF GOLD-DECORATED CRYSTAL  
GLASS STEMWARE**

Bell-shaped bowls with flaring rim enriched with floral and scroll borders in embossed gold. Comprising sixteen goblets, fourteen white wines, three clarets, fifteen ports, twelve sherries, five liqueurs, sixteen sherbets, sixteen nut dishes, and fourteen finger bowls; some chipped. Monogrammed. (*Musa Bence Liggett*)

18-

**WORCESTER, MEISSEN, AND LIMOGES**

**TABLE PORCELAINS**

NUMBERS 8-34

8 **LIMOGES PORCELAIN TURKEY PLATTER**

Decorated with delicate floral borders; twenty-four bouillon cups and eleven saucers to match. Together with a Royal Doulton pottery salad bowl and square dish, decorated with English scenes. Thirty-eight pieces in all. (*Musa Bence Liggett*)

5-

9 **LOT OF SPODE AND VIENNA PORCELAIN PLATES**

750  
Comprising two Aynsley pink-decorated luncheon plates, twelve Spode bread and butter plates, twelve porcelain salad plates, six Nippon fruit plates, and a fruit-decorated compote. (*Musa Bence Liggett*)

10 **SATSUMA WARE TEA SERVICE AND TWO VASES**

72 50  
Comprising teapot, sugar bowl, covered creamer, six cups and saucers, and six plates; brown and gold borders with reserves containing party scenes. (*Musa Bence Liggett*)

11 **LIMOGES GOLD- AND ROSE-DECORATED BREAKFAST SERVICE AND A PORCELAIN LUNCHEON SERVICE**

13-  
Comprising coffee pot, teapot, hot water jug, sugar bowl and creamer, covered dish, two cups and saucers, egg cup, four plates, one bowl, and two deep dishes. Together with a seventy-four-piece luncheon set. Some pieces chipped. (*Musa Bence Liggett*)

12 **TWELVE COPELAND DESSERT PLATES**

27 50  
The cavettos decorated with different birds. Together with six Wedgwood octagonal salad plates enameled with pheasants in bright colors. (*Musa Bence Liggett*) Diameter, 9 inches

13 **LIMOGES DECORATED BREAKFAST SERVICE**

15-  
Comprising coffee pot, chocolate pot, hot water jug, sugar bowl, creamer, waste bowl, toast dish and cover, egg cup, three plates, two cups and saucers, and three other pieces. Decorated with floral sprigs and gold. Nineteen pieces in all; several pieces imperfect. (*Musa Bence Liggett*)



[NUMBERS 14 (TWO AT TOP) AND 15]

14 TWELVE ROYAL WORCESTER SERVICE PLATES

R. RUSHTON

62<sup>56</sup> Richly gilded and painted in bright colors with views of English gardens. (*Musa Bence Liggett*) Diameter, 10½ inches

[SEE ILLUSTRATION OF TWO]

15 BLUE AND GOLD DECORATED PORCELAIN  
DESSERT SERVICE

80- Comprising ten plates, three oval dishes, and four oblong dishes with shell-shaped handles. Centres contain floral sprays in brilliant colors bordered in royal blue heightened with gold. Some chipped. (*Musa Bence Liggett*)

[SEE ILLUSTRATION OF PART]

16 SIX WORCESTER PLATES AND SIX LIMOGES  
CUPS AND SAUCERS

10- Blue borders surrounding leaf decoration in colors; cups and saucers with green, red, and gold fern decoration. Together with twelve gold-bordered salad plates. (*Musa Bence Liggett*)

17 **MINTON PORCELAIN DECORATED CANAPE TRAY**

Decorated with floral sprays; together with a Meissen porcelain hors d'oeuvres dish and two Sèvres porcelain blue- and gold-decorated deep dishes. (*Musa Bence Liggett*)

*Diameters, 18 $\frac{1}{4}$  and 15 inches*

18 **LIMOGES PORCELAIN DECORATED BREAKFAST SERVICE**

Comprising coffee pot, teapot, hot water jug, sugar, creamer, covered dish, two plates, cereal dish, and cup and saucer. Together with a continental porcelain breakfast service of fourteen pieces. (*Musa Bence Liggett*)

19 **WEDGWOOD DARK BLUE JASPER WARE TEA SERVICE**

Comprising teapot, sugar bowl, and creamer; drum-shaped and decorated with classical figures in white relief.

*Height of teapot, 5 inches*

20 **PAIR MEISSEN AJOURE GOLD-DECORATED CAKE PLATES**

Painted with floral motives and mounted with figures of a girl with flowers in her apron and a boy carrying a wreath.

*Diameters, 8 inches*

21 **TWELVE LIMOGES DECORATED PLATES**

Rich gold and dark blue borders enclosing floral bouquet. Together with twelve bread and butter plates in assorted colors and designs. (*Musa Bence Liggett*)

22 **TWELVE LENOX GOLD-BANDED PORCELAIN SHERBETS**

In silver-plated holders with chased panels. (*Musa Bence Liggett*)

23 **FIVE LENOX PORCELAIN RAMEKINS WITH STERLING SILVER HOLDERS**

One extra holder. Together with eleven gold-banded Limoges porcelain ramekins and ten saucers. Some chipped. (*Musa Bence Liggett*)

- 15- 24 **TWELVE DECORATED PORCELAIN DINNER PLATES**  
 Decorated with hunting scenes in naturalistic colors. (*Musa Bence Liggett*) *Diameter, 10½ inches*
- 17<sup>50</sup>- 25 **FIVE PIECES OF ROYAL WORCESTER GOLD-DECORATED PORCELAIN**  
 Comprising two large pitchers, two small pitchers, and one small jug; with floral decoration and gold borders. (*Musa Bence Liggett*)
- 17<sup>50</sup>- 26 **TWELVE MEISSEN GOLD-DECORATED PORCELAIN FRUIT COCKTAILS WITH UNDER DISHES**  
 Having gilded lining and festooned borders. Together with twenty-one Japanese dessert plates, and a cake plate. (*Musa Bence Liggett*)
- 30- 27 **MEISSEN PORCELAIN SALAD SERVICE**  
 Comprising two salad bowls and fourteen plates, decorated with floral sprays and paneled reserves containing vignettes. (*Musa Bence Liggett*)
- 17<sup>50</sup>- 28 **MEISSEN PORCELAIN AJOURE DESSERT SERVICE**  
 Comprising compote and twelve plates, decorated with pierced borders and floral forms and vignettes in paneled reserves. (*Musa Bence Liggett*) *Diameter, 8¼ inches*
- 20- 29 **PAIR EMPIRE PORCELAIN FLOWER VASES AND PAIR ITALIAN POTTERY VASES**  
 Decorated with portraits of a boy and a girl and floral forms in panels; pottery vases inscribed *Salve* and *Ars*. (*Musa Bence Liggett*) *Heights, 9½ and 13¼ inches*
- 17<sup>50</sup>- 30 **SET OF TWELVE WEDGWOOD QUEEN'S IVORY SALAD PLATES**  
 Centres decorated with hunting scenes in bright colors. (*Musa Bence Liggett*) *Diameter, 8½ inches*
- 20- 31 **TWENTY-FOUR ENGLISH PORCELAIN FISH PLATES**  
 The centre with fish in water in naturalistic colors on a yellow ground. (*Musa Bence Liggett*) *Diameter, 9¼ inches*
- 22<sup>50</sup>- 32 **TWENTY-FOUR WEDGWOOD SALAD PLATES**  
 Decorated with hunting scenes, Tally Ho, Full Cry, etc., in bright colors. (*Musa Bence Liggett*) *Diameter, 9 inches*





[NUMBER 33]

33 PAIR OLD DELFT PLAQUES

ATTRIBUTED TO DAVID KAM, 1697

17<sup>10</sup> Cavetto with scene of pavilion through which walks a mandarin attended by his servant with a fan; border with separate landscape and figural views. Slight chips. (*Musa Bence Liggett*)

*Diameter, 15¼ inches*

[SEE ILLUSTRATION OF ONE]

34 OLD DELFT PLAQUE

ATTRIBUTED TO VAN DUYN, 1685

7<sup>10</sup> Decorated in dark blue with flowering tree and scalloped medallions. (*Musa Bence Liggett*)

*Diameter, 13¼ inches*

**ENGLISH GILDED SILVER, STERLING SILVER**  

---

**AND SHEFFIELD PLATE**  

---

NUMBERS 35-87

**35 COLLECTION OF SILVER AND SILVER-PLATED OBJECTS**

30-

Twelve place card holders, eight cut crystal place card holders, four butter patties, and five miniature ornamental objects. (*Musa Bence Liggett*)

**36 SET OF SIX GILDED SILVER DEMI-TASSE SPOONS AND FOUR GILDED SILVER BUD VASES**

15-

Spoons richly ornamented with scrolled leafage, in case; conical vase with flaring fluted rim. (*Musa Bence Liggett*)

**37 SHEFFIELD PLATED WELL-AND-TREE PLATTER**

15-

Scalloped rim with grape and vine border in high relief. (*Musa Bence Liggett*)      *Length, 20½ inches*

**38 SILVER-PLATED OVAL PLATTER**

10-

Scalloped and molded rim. (*Musa Bence Liggett*)      *Length, 22 inches*

**39 FOUR GILDED SHELL-SHAPED SALTS WITH PEPPER SHAKERS TO MATCH**

85-

Dolphin stems and wave-decorated oval base. Together with four shell-shaped salt spoons. (*Musa Bence Liggett*)      *Heights, 7¼ and 4¼ inches*

**40 THREE SILVER-PLATED TRAYS**

17<sup>50</sup>

Two circular and one oval, with chased medallion and pierced gallery. (*Musa Bence Liggett*)

**41 TWO SILVER-PLATED WATER PITCHERS**

12<sup>50</sup>

One urn-shaped with molded rim, shoulder, and base; the other chased with shell motive and bordered with Teniers' figures. (*Musa Bence Liggett*)      *Heights, 9½ and 8 inches*

42 **THREE STERLING SILVER FLOWER BASKETS**

Tall conical shape with hinged handles and circular spreading bases; together with a plated basket, pierced. (*Musa Bence Liggett*)  
*Heights, 4½ to 11¼ inches*

10-

43 **SILVER-PLATED TWO-HANDLED COVERED TUREEN**

GORHAM & CO.

Oval body with gadroon banding, molded cover, with ringed handle. (*Musa Bence Liggett*)  
*Length, 13¼ inches*

22<sup>50</sup>-

44 **COLLECTION OF EIGHT SILVER AND SILVER-PLATED SMALL PITCHERS**

Of various styles and shapes. (*Musa Bence Liggett*)  
*Heights, 1¾ to 3½ inches*

27<sup>50</sup>-

45 **TWENTY-ONE STERLING SILVER AND SILVER-PLATED SMALL ARTICLES**

Comprising a bud vase, two spirit lamps, a nest of ash trays, salt and pepper shakers, and other articles. (*Musa Bence Liggett*)

25-

46 **SIX GEORGIAN SILVER BERRY SPOONS**

Gilded bowls with fruits in *repoussé*; handles engraved with floral and leaf forms. Marked.

30-

47 **FIVE SILVER-PLATED TALL VASES**

All hexagonal, with tall flaring bodies; two pairs and a single vase. (*Musa Bence Liggett*)

15-

*Heights, 19¾, 26, and 27½ inches*

48 **SET OF GILDED SILVER SPOONS**

In palm tree and leaf pattern. Comprising five serving spoons, twelve teaspoons, and twelve demi-tasse spoons. (*Musa Bence Liggett*)

30-

- 25- 49 **TWELVE STERLING SILVER PARFAITS**  
Glass liners with leaf-cut border; five extra liners. (*Musa Bence Liggett*) *Height, 6 inches*
- 25- 50 **GEORGE III IRISH SILVER FISH SLICE**  
*DARBY KEHOE, DUBLIN, 1777*  
Together with seven sterling silver servers. (*Musa Bence Liggett*)
- 40- 51 **SHEFFIELD PLATED COFFEE POT AND A HOT WATER POT ON STAND**  
Coffee pot of urn shape, crested; hot water pot with spirit lamp. Together with a silver-plated cocktail shaker. (*Musa Bence Liggett*) *Heights, 9 and 6 $\frac{3}{4}$  inches*
- 17<sup>50</sup> 52 **STERLING SILVER CRUMBER AND TRAY AND A CIRCULAR SALVER**  
Monogrammed. Together with an English silver naturalistic maple leaf. (*Musa Bence Liggett*)
- 10- 53 **FOUR GILDED SILVER BUD VASES**  
Lily-shaped; in case. (*Musa Bence Liggett*) *Height, 5 inches*
- 12<sup>50</sup> 54 **SEVEN SILVER AND SILVER-PLATED ARTICLES**  
Comprising two silver bud vases, two silver overlaid vases, pair of French silver-plated candlesticks, and silver-plated cocktail shaker. (*Musa Bence Liggett*)
- 30- 55 **NINE STERLING SILVER AND SILVER-PLATED SMALL ARTICLES**  
Comprising an *ajouré* basket, two trays, a miniature piecrust table, a miniature covered tureen, a *repoussé* goblet (monogrammed), a cup, and a silver-mounted ash tray. (*Musa Bence Liggett*)

56 **TWO PAIRS ADAM SHEFFIELD PLATED  
BONBON DISHES**

25- Together with three small covered vegetable dishes with removable lock handles and an *ajouré* bonbon dish. (*Musa Bence Liggett*)

57 **SET OF SIX EMPIRE SILVER SALTS**

32- Engraved bowls on short stem, triangular scrolled base. Marked. (*Musa Bence Liggett*)

58 **TWELVE SILVER-PLATED JULEP CUPS**

30- Plain tapered cylindrical bodies; crested. (*Musa Bence Liggett*)  
Height,  $4\frac{1}{3}$  inches

59 **PAIR GEORGIAN SHEFFIELD PLATED CANDLESTICKS**

15- Circular domed base with conical shaft and urn-shaped candle socket with gadroon moldings. Height,  $10\frac{1}{4}$  inches

60 **GEORGIAN SHEFFIELD PLATED OVAL TEA TRAY**

27- Gadroon-molded and with leaf-decorated loop handles. Length,  $23\frac{1}{2}$  inches

61 **ENGLISH GILDED OVAL PLATTER**

25- Molded border with gadroon edge having shell and oak leaf mounts. (*Musa Bence Liggett*) Length, 20 inches

62 **ENGLISH GILDED OVAL PLATTER**

25- Companion to the preceding. (*Musa Bence Liggett*)  
Length,  $22\frac{1}{4}$  inches

63 **TWO PAIR GILDED SILVER AJOURE BONBON DISHES  
AND SIX SILVER SHELL-SHAPED SALTS**

35- Bonbon dishes with scrolled border; monogrammed. Salts with dolphin feet. Together with six sterling silver porringer-shaped salts having tiny salt spoons to match. (*Musa Bence Liggett*)

- 64 **GEORGIAN SHEFFIELD PLATED SOUP TUREEN**  
 Melon-shaped bowl on oval domed base, having gadrooned scalloped edge and molded loop handles; domed cover with urn-shaped finial. Crested. *Length, 15 inches*  
 32<sup>50</sup>
- 65 **SILVER-PLATED COFFEE SERVICE IN THE QUEEN ANNE TASTE** CRICHTON & CO.  
 Comprising teapot, covered sugar bowl, creamer, and waste bowl; the elongated pear-shaped teapot with domed cover and wooden loop handle, the creamer with acanthus thumbpiece on handle. *Height of teapot, 7½ inches*  
 40-
- 66 **PAIR GEORGE III SHEFFIELD PLATED CANDLESTICKS**  
CIRCA 1820  
 Molded circular base, conical molded shaft, and flower-shaped candle socket. *Height, 10½ inches*  
 30-
- 67 **GEORGE III SHEFFIELD PLATE DECANTER STAND**  
CIRCA 1780  
 Triangular-shaped stand with loop handle, scalloped and gadrooned molding, and three claw feet; fitted with three clear glass decanters. Crested. *Height, 11½ inches*  
 22<sup>50</sup>
- 68 **SIX ENGLISH GILDED SILVER DESSERT SPOONS**  
 Handles with mask and leaf scroll; together with six gilded silver service spoons with shell bowls. (*Musa Bence Liggett*)  
 42<sup>50</sup>
- 69 **FOUR GILDED STERLING SILVER LEAF-SHAPED ALMOND DISHES**  
 In the shape of an oak leaf with hollow centre, with acorn mounts on stems. (*Musa Bence Liggett*) *Length, 9½ inches*  
 40-
- 70 **SHEFFIELD PLATED INKSTAND**  
 Scalloped stepped base surmounted by a draped female figure gazing into a crystal. On either side is a terrestrial and celestial globe hinged to form compartments. *Length, 13 inches*  
 32<sup>50</sup>

71 **GEORGE III SILVER CRUET**

S. HENNELL, LONDON, CIRCA 1800

47<sup>50</sup> Stand with gadrooned base and paw feet; fitted with four cut glass condiment bottles. *Height, 5½ inches*

72 **ENGLISH SILVER INKSTAND**

30- Oblong tray with loop handle and ball feet, with two clear glass inkwells having silver tops. *Length, 9 inches*

73 **TWO PAIRS SHEFFIELD PLATED COASTERS**

27<sup>50</sup> One with gadrooned edge, the other with pierced sides and scalloped rim. *Diameters, 6 and 5½ inches*

74 **PAIR SILVER-PLATED SAUCE BOATS AND LADLES**

ADAM STYLE

37<sup>50</sup> Bowls decorated with medallions and swags depending from bowknots. Loop handles. Together with two Sheffield plate hot dishes with loop handles and ball feet.

75 **PAIR GEORGE III SHEFFIELD PLATE SALTS**

N. SMITH & CO., SHEFFIELD, 1784

17<sup>50</sup> Pierced oval bowl on high scroll feet, with blue glass liners. Together with a pair of silver-plated coasters having plain molded gallery.

76 **PAIR GEORGIAN SHEFFIELD PLATED ENTREE DISHES WITH COVERS**

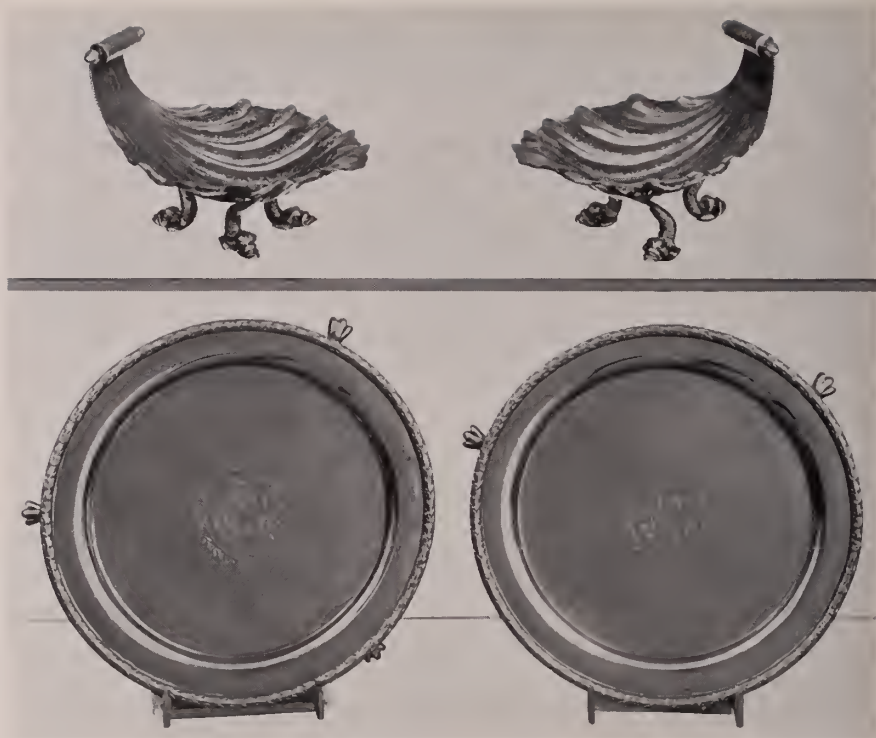
47<sup>50</sup> Oblong, with gadrooned and shell-decorated edge; the cover, with matching ornamentation and removable lock handles, becomes an extra dish. *Length, 11½ inches*

77 **SHEFFIELD PLATED CENTREPIECE**

40- Octagonal cut glass bowl supported by high stand with scroll legs and ball feet; having stretcher with urn and flame-shaped finial. *Height, 11 inches*

78 **PAIR GEORGIAN SHEFFIELD PLATED CHAMBER STICKS**

15- Flower-shaped candle socket on scalloped tray; scroll handles. *Height, 4 inches*



[NUMBERS 79 (AT TOP) AND 80]

**79 FOUR GEORGE III GILDED SILVER SHELL-SHAPED NUT DISHES** PAUL STORR, LONDON, 1808

*Out*

Concave scallop shells terminating in scrolls and resting on three curved feet in the form of dolphins. (*Musa Bence Liggett*) *Length, 5 inches*

[SEE ILLUSTRATION OF TWO]

**80 FOUR GEORGE III GILDED SILVER SALVERS**

T. ROBBINS, LONDON, 1812-13

*Out*

Laurel-molded border, three paw feet; engraved coat of arms. Total weight, approximately 40 ounces. (*Musa Bence Liggett*) *Diameter, 6 $\frac{3}{4}$  inches*

[SEE ILLUSTRATION OF TWO]

**81 PAIR GEORGIAN SHEFFIELD PLATED WINE COOLERS**

*80-*

Urn-shaped bowls on cushion feet; ornamented with heavy bead molding and shell motives. Scrolled loop handles.

*Height, 8 $\frac{1}{4}$  inches*



82 **SHEFFIELD PLATED TEA AND COFFEE SERVICE**

40- Comprising teapot, coffee pot, sugar bowl, and creamer, of molded oblong shape with slightly domed covers, wooden finials and loop handles.

83 **SILVER-PLATED HOT WATER URN** ADAM STYLE

45- Egg-shaped bowl with domed cover and lion-mask ring handles; on square molded base with ball feet.

*Height, 17½ inches*

84 **PAIR SHEFFIELD PLATED THREE-LIGHT CANDELABRA** ADAM STYLE

60- Square acanthus and egg-and-dart molded stepped base. Reeded columnar shaft; scroll leaf-decorated arms and bobêches.

*Height, 19 inches*

85 **SHEFFIELD PLATED TWO-HANDLED TRAY**

47<sup>10</sup>- Plain oblong tray with simple molded edge and reeded loop handles; crested.

*Length, 26 inches*

86 **ENGLISH SILVER TEA AND COFFEE SERVICE**

GEORGE III STYLE

85- Comprising coffee pot, teapot, sugar bowl and creamer; of suppressed oval form with molded shoulder and gadrooned rim, the pots with pearwood finials and loop handles.

87 **SHEFFIELD PLATE EPERGNE** CIRCA 1810

115- Vase- and lily-shaped shaft supporting circular molded glass dish; with four scrolled arms fitted for use as candle holders or sweetmeat dishes. *Height, 20 inches; diameter, 20 inches*

**FURNITURE AND DECORATIVE OBJECTS, INCLUDING A**

**STEINWAY PARLOR GRAND PIANO**

NUMBERS 88-190

88 **INLAID MARQUETRY JEWEL BOX**

15- Of oblong temple design, with mirror-lined top concealing velvet-fitted compartments. Stepped base fitted with velvet-lined drawer. Profusely inlaid to simulate architectural details. (*Musa Bence Liggett*)

- 89 **PAIR MINTON PORCELAIN GOLD-DECORATED FLOWER POTS**  
 17<sup>50</sup> *Rose du Barry* glaze with floral forms in white reserves, outlined in gold. (*Musa Bence Liggett*)
- 90 **PAIR VENETIAN GLASS PERFUME BOTTLES**  
 5- Gold-flecked rose-colored bottles with swan handles and flower bouquet stoppers; together with a covered bowl. (*Musa Bence Liggett*) *Height of bottles, 12 $\frac{3}{4}$  inches; of bowl, 8 $\frac{1}{2}$  inches*
- 91 **PAIR PRESSED CLEAR GLASS CANDELABRA**  
 15- CIRCA 1830  
 Together with a pair of Bohemian green glass candlesticks hung with bar lustres. Repaired. *Heights, 12 and 21 inches*
- 92 **PAIR MINIATURE HURRICANE SHADES**  
 10- Clear glass decorated with grapevine arabesques.  
*Height, 10 inches*
- 93 **THREE BRISTOL GOLD-DECORATED VASES**  
 7<sup>50</sup> One pair of overlay with alternate sprays of blossoms and reserves etched in gold; one with reserves in clear cut crystal. (*Musa Bence Liggett*) *Heights, 7 and 6 inches*
- 94 **THREE PORTRAIT MINIATURES AND AN IVORY PLAQUE**  
 15- Waist-length portraits of ladies; ivory *bas relief* of Queen Victoria. (*Musa Bence Liggett*)
- 95 **TWO PAIRS SANDWICH GLASS LAMPS**  
 17<sup>50</sup> Clear molded glass; hexagonal base, molded shaft and paneled bowl. *Height, 11 inches*
- 96 **BRONZE STATUETTE OF A HORSE**  
 10- A hunter surmounting an oval base. (*Musa Bence Liggett*)  
*Height, 15 inches*
- 97 **PAIR MEISSEN PORCELAIN GROUPS FITTED AS LAMPS**  
 15- Seated figure of cherub playing with lamb, the companion piece with dog; *bocage* of ormolu leafage and porcelain flowers. Fitted for electricity. (*Musa Bence Liggett*)  
*Height, 12 inches*

98 **LOUIS XVI BRONZE DORE AND SEVRES CLOCK GARNITURE**

37<sup>50</sup> Clock in square case with reeded stiles having paw feet; shaped base. Face decorated to match the two accompanying Sèvres urns with *bronze doré* mounts.

*Height of clock, 17 inches; of urns, 9½ inches*

99 **TERRA COTTA JARDINIÈRE AND STAND**

5- Octagonal jardinière with *bas relief* of cherubs. Stand of similar shape with griffin supports on shaped and molded base. (*Musa Bence Liggett*) *Total height, 39 inches*

100 **PAIR WROUGHT IRON AND BRASS TORCHERES**

LOUIS XIII STYLE

20- Handsome tall candlestick, finely mounted in brass on scrolled tripod. (*Musa Bence Liggett*) *Height, 57 inches*

101 **PAIR ITALIAN POTTERY COVERED VASES**

7<sup>50</sup> Inverted pear-shaped bodies decorated with all over pattern of birds and floral forms in yellow, blue, and green. (*Musa Bence Liggett*) *Height, 16¼ inches*

102 **SCALE MODEL OF A MAN OF WAR**

22<sup>50</sup> Fully rigged three master with mainsails, topsails, and jib-boom, some set, some furled. Hull shows twenty-seven cannon on each side.

103 **WEDGWOOD JASPER WARE LAMP**

30- Square blue base having classical figures in white relief; frosted engraved shade with crystal glass lustres; fitted for electricity. Together with a hurricane shade engraved with grape and leaf arabesques.

*Height of lamp, 19½ inches; of shade, 18 inches*

104 **PAIR COLONIAL BRASS ANDIRONS**

10- With tapering columnar shaft and urn-shaped finial; scrolled legs. (*Musa Bence Liggett*) *Height, 24 inches*

105 **BRASS FIRE SET**

12<sup>50</sup> Comprising pair of square blocked andirons, fire tools on stand, and four-paneled fire screen. (*Musa Bence Liggett*)

*Height of andirons, 20 inches*

106 **AMERICAN CURLY MAPLE CHEST OF DRAWERS**

22<sup>50</sup> Drawer fronts with molded edge; walnut knobs. Molded base and scrolled bracket feet.

*Height, 34½ inches; length, 35 inches*

107 **AMERICAN CHERRY DROP-LEAF BEDSIDE TABLE**

CIRCA 1820

20- Slender turned legs; one drawer, with brass knob. Together with two cherry and mahogany Empire side chairs.

108 **AMERICAN MAHOGANY BEDSIDE TABLE**

12<sup>50</sup> Square top, apron containing two drawers with satinwood stringings. Brass knobs. Square tapering legs.

*Height, 28½ inches; width, 19¾ inches*

109 **PAINTED MAPLE LOW-POST BED**

12<sup>50</sup> Panels, posts, and rails 'grained' in the Hitchcock style; with striping and leafage decorated in gold. (*Musa Bence Liggett*)

*Length, 6 feet 6 inches; width, 44 inches*

110 **CARVED AND PANELED OAK CHEST**

5- Hinged and paneled top; leaf-carved stiles. (*Musa Bence Liggett*)

*Height, 27 inches; length, 5 feet*

111 **CROTCH MAHOGANY EMPIRE DRESSING TABLE**

AMERICAN, XIX CENTURY

12<sup>50</sup> Shaped gallery top, the cyma-molded frieze concealing two drawers; shaped shelf, turned legs. (*Musa Bence Liggett*)

*Height, 36 inches; width, 32 inches*



[NUMBER 112]

[NUMBER 113]

112 **PHYFE MAHOGANY CARVED TRIPOD TILT-TOP TABLE**

Crotch mahogany veneered oblong top with canted corners; elaborately turned and acanthus-carved shaft with reeded out-curved legs. *Height, 28 $\frac{1}{4}$  inches; width, 26 inches*

[SEE ILLUSTRATION]

113 **SHERATON CARVED MAHOGANY ARMCHAIR**

Square back with three pierced slats and fluted medallion on top rail. Curved arms with curved supports having rosace terminals; square tapering reeded legs with spade feet. Seat upholstered in blue damask.

[SEE ILLUSTRATION]

114 **DECORATIVE MAHOGANY SHELF CLOCK**

T. M. ROBERTS, BRISTOL, CONN., CIRCA 1830

Rectangular case with black and gold pilasters and decorated glass front. (*Musa Bence Liggett*)

*Height, 33 inches; width, 16 inches*

- 115 **DECORATED SYCAMORE FERN STAND AND  
WORK TABLE** ADAM STYLE  
Metal-lined fern stand and small tray-top sewing table. (*Musa  
Bence Liggett*) *Heights, 32 and 40 inches*
- 27<sup>50</sup>
- 116 **CARVED WALNUT CONSOLE TABLE AND BENCH**  
Console table with rectangular black and gold marble top on  
nulled frieze, supported by heavily scrolled legs. Bench with  
upholstered needlepoint seat and turned legs and stretchers.  
(*Musa Bence Liggett*)
- 15-
- 117 **CARVED AND GILDED MINIATURE WALL MIRROR** AMERICAN, CIRCA 1800  
Heavy cornice from which are suspended fourteen acorn  
forms; supported by spiral-twisted columns. Probably a scale  
model. *Height, 14 inches; width, 8¼ inches*
- 22<sup>50</sup>
- 118 **AMERICAN MAPLE MIRROR WITH PAINTED PANEL** XIX CENTURY  
Panel at top showing marine view with a rocky coast at the  
right, an anchored fishing smack in the foreground, other  
boats in the distance; above rectangular glass.  
*Height, 44 inches; width, 34 inches*
- 17<sup>50</sup>
- 119 **WROUGHT STEEL FIRE SET**  
Comprising pair of scrolled andirons, fire screen, and poker.  
(*Musa Bence Liggett*) *Height of andirons, 24 inches*
- 7<sup>50</sup>
- 120 **CHIPPENDALE CARVED MAHOGANY PIECRUST  
TRIPOD TABLE**  
Top of figured mahogany with molded edge; slender vase- and  
bowl-turned shaft with carved cabriole legs and claw and ball  
feet. *Height, 24 inches; diameter, 18½ inches*
- 17<sup>50</sup>

- 175- 121 **ENGLISH MAHOGANY STOOL IN THE FRENCH TASTE**  
Cabriole legs; knees and seat rail carved with drop and shell motives.
- 10- 122 **CARVED, POLYCHROMED, AND GILDED WALL MIRROR** EARLY GEORGIAN STYLE  
Cartouche-shaped frame, carved with swags of fruit and flowers. (*Musa Bence Liggett*)  
*Height, 48 inches; width, 26½ inches*
- 275- 123 **PAIR LACQUERED BEECHWOOD ARMCHAIRS** SHERATON STYLE  
Caned seat with gold and silk brocade cushion. (*Musa Bence Liggett*)
- 75- 124 **JACOBEOAN CARVED OAK SMALL SETTLE**  
Carved two-panel back, solid seat; turned legs with plain stretchers. (*Musa Bence Liggett*) *Length, 37 inches*
- 35- 125 **THREE DECORATED SYCAMORE SIDE CHAIRS AND AN OCCASIONAL TABLE** ADAM STYLE  
Chairs with caned oval back and seat; small oblong table with drawer. (*Musa Bence Liggett*)
- 20- 126 **WALNUT UPHOLSTERED BOUDOIR CHAIR AND A CHAUFFEUSE** LOUIS XVI STYLE  
Both covered in mauve damask; fluted tapering legs. Printed chintz slip covers. (*Musa Bence Liggett*)
- 25- 127 **BOULLE ECRITOIRE** FRENCH, XIX CENTURY  
Small cabinet table fitted for writing purposes; richly inlaid and veneered with brass, tortoise shell and ebony, and mounted in gilded bronze. (*Musa Bence Liggett*)  
*Height, 31 inches; width, 27 inches*

128 TWO DECORATED SYCAMORE OCCASIONAL TABLES

ADAM STYLE

25- Oval table and tripod table. Painted with medallion figures and flowers. (*Musa Bence Liggett*) Lengths, 29 and 34 inches

129 AMERICAN OAK CARVER CHILD'S CHAIR

20- Turned back rails and front legs; rush seat.

130 SHERATON MAHOGANY INLAID BANJO BAROMETER

ENGLISH, CIRCA 1790

20- Fitted with humidity gauge, small mirror, and barometer; banded in holly. Height, 19½ inches

131 PAIR CARVED OAK DAMASK UPHOLSTERED SIDE CHAIRS

CHARLES II STYLE

12 ½ Carved and turned legs with carved frontal stretcher; upholstered in crimson damask. (*Musa Bence Liggett*)

132 PAIR SMALL CONVEX MIRRORS WITH GILDED FRAMES

AMERICAN, CIRCA 1820

45- Concave molded frame with spherical pendants.

Diameter, 15½ inches

133 SHERATON INLAID MAHOGANY KIDNEY TABLE

25- Centre drawer above knee-hole flanked by two smaller drawers; convex returns banded in satinwood; square tapered legs.

Height, 39¼ inches; length, 42 inches

134 SHERATON MAHOGANY BEDSIDE TABLE

AMERICAN, XVIII CENTURY

12 ½ Square top with one drawer; on four turned tapering legs.

Height, 28½ inches; width, 19 inches



- 20- 135 **PAIR MAHOGANY SIDE TABLES** QUEEN ANNE STYLE  
With molded cornice, valanced skirt, and carved cabriole legs terminating in Spanish feet; fitted with two small drawers. (*Musa Bence Liggett*) Height, 28 inches; length, 29 inches
- 25- 136 **MAHOGANY SILK VELVET UPHOLSTERED CHAISE LONGUE** LOUIS XVI STYLE  
Upholstered and tufted in rose silk velvet, with loose cushion. Fluted tapering legs. (*Musa Bence Liggett*) Length, 5 feet
- 15- 137 **CREME LAQUE CANNE SETTEE AND SIDE CHAIR** LOUIS XIV STYLE  
Sofa with molded back and arms, carved rails, and fluted tapering legs; with upholstered lambrequin, armpads, and seat cushion in cream rep. Side chair to match. (*Musa Bence Liggett*) Length of sofa, 5 feet
- 15- 138 **CREME LAQUE CANNE ARMCHAIR AND BERGERE**  
Similar to the preceding. With rose brocade valance, armpads, and cushion. (*Musa Bence Liggett*)
- 15- 139 **CREME LAQUE CANNE WINDOW SEAT AND CENTRE TABLE**  
Window seat with loose brocade cushion. Shaped oblong table with molded gray marble top, fluted tapering legs joined by H-stretchers. (*Musa Bence Liggett*)
- 15- 140 **EMPIRE MAHOGANY TALL-CASE CLOCK**  
Glazed front and side panels; three quarter-round pilasters supporting arched molded pediment; bracket feet. (*Musa Bence Liggett*) Height, 7 feet 10 inches



[NUMBERS 141 AND 142]

141 **HEPPLEWHITE MAHOGANY SERPENTINE  
FRONT BUREAU**

AMERICAN, XVIII CENTURY

85- Curved front contains four long drawers in crotch or flame-  
figured mahogany. Cyma-molded base and ogee bracket feet.  
(*Musa Bence Liggett*) Height,  $37\frac{1}{2}$  inches; length, 41 inches

[SEE ILLUSTRATION]

142 SHERATON INLAID MAHOGANY DRESSING MIRROR

ENGLISH, XVIII CENTURY

25- Comprising oval swivel mirror on shaped support surmounting bow-shaped base with three drawers. (*Musa Bence Liggett*)  
*Height, 20 inches; length, 20½ inches*

[SEE ILLUSTRATION]

143 PAIR YELLOW AND GOLD LACQUER SIDE CHAIRS

QUEEN ANNE STYLE

35- Shaped seat in flowered silk brocade. (*Musa Bence Liggett*)

144 LOUIS PHILIPPE BOULLE CAVÉ À LIQUEUR

FRENCH, XIX CENTURY

60- Portable small chest with hinged top and side; richly inlaid with brass and tortoise shell. Equipped with four gilded cut glass decanters and sixteen goblets. Needs a few small repairs. (*Musa Bence Liggett*)

*Height, 11 inches; length, 13 inches*

145 CARVED OAK LIBRARY TABLE

JACOBEAN STYLE

12 1/2 Rectangular top fitted with two drawers; carved frieze, turned and carved legs and stretcher. (*Musa Bence Liggett*)

*Height, 32½ inches; length, 51 inches*

146 JACOBEAN CARVED OAK GATE-LEG TABLE

22 1/2 Oval top banded with carved leaves and rosettes. Turned baluster legs and stretchers; fitted with one drawer. (*Musa Bence Liggett*)  
*Height, 28 inches; length open, 54 inches*

147 PAIR UPHOLSTERED WALNUT LOVE SEATS IN THE SHERATON TASTE

120- Small settee in figured green brocatelle damask in *point d'Hongrie* style; two seat cushions. Printed linen slip covers. (*Musa Bence Liggett*)  
*Length, 44 inches*

148 SHERATON MAHOGANY WORK TABLE

AMERICAN, CIRCA 1800

27<sup>10</sup>

Square top with one fitted drawer; ringed outset pilasters at corners extending to reeded and tapered turned legs. (*Musa Bence Liggett*)  
*Height, 27½ inches; width, 21 inches*

149 PAIR WROUGHT STEEL TALL ANDIRONS

20-

On tripod base with swinging pot hooks and rest; together with four fire tools on stand, and a long-handled bellows. (*Musa Bence Liggett*)  
*Height, 48 inches*

150 AMERICAN CURLY MAPLE CHEST OF DRAWERS

60-

Finely figured curly maple chest of four drawers fitted with brass bail handles; plain molded base on ogee feet.  
*Height, 32 inches; length, 40 inches*

151 EMPIRE CARVED MAHOGANY BED

Passed

Shaped headboard and footboard with carved pineapple turned posts. (*Musa Bence Liggett*)  
*Length, 6 feet 6 inches; width, 58 inches*

152 FOUR AMERICAN TURNED ASH SLAT-BACK  
SIDE CHAIRS

25-

Back with four slats; ring- and sausage-turned uprights, front legs, and stretchers; interwoven slat seat.

153 PAIR TURNED OAK SPLAY-LEGGED STOOLS IN  
POINT D'HONGRIE

17<sup>10</sup>

In the Jacobean taste; square top covered in silk and wool needlework of zig-zag design. (*Musa Bence Liggett*)  
*Width, 17½ inches*

154 **PAINTED OAK GAME ROOM SUITE**

Comprising two armchairs, one large oblong table, and four smaller tables, for the billiard room. (*Musa Bence Liggett*)

155 **POCKET BILLIARD TABLE AND ACCESSORIES**

BRUNSWICK-BALKE-COLLENDER COMPANY

Complete with cues, rack, and balls. (*Musa Bence Liggett*)

*Length, 8 feet 6 inches; width, 52 inches*

156 **SQUARE DECORATED SATINWOOD  
BREAKFAST TABLE**

SHERATON STYLE

Paneled frieze, square tapering legs joined by paneled X-shaped stretchers; with carved and polychromed floral ornament. (*Musa Bence Liggett*)

*Height, 30½ inches; length, 42 inches*

157 **SET OF EIGHT SATINWOOD DECORATED DINING  
CHAIRS WITH RUSH SEATS**

SHERATON STYLE

(*Musa Bence Liggett*)

158 **PAIR DECORATED SATINWOOD SEMI-CIRCULAR  
CONSOLE TABLES**

SHERATON STYLE

With polychromed and carved stretcher ornamentation. (*Musa Bence Liggett*)

*Height, 30½ inches; length, 42 inches*

159 **CHIPPENDALE PARCEL-GILDED AND MAHOGANY  
WALL MIRROR**

ENGLISH, XVIII CENTURY

Shaped frame with fret-carved outline and gilded bird ornament on crest. (*Musa Bence Liggett*)

*Height, 45 inches; width, 23 inches*

160 **PAIR CROMWELLIAN CARVED OAK  
WAINSCOT ARMCHAIRS**

Panel back with richly carved crest; solid seat, turned legs and stretchers. (*Musa Bence Liggett*)

- 161 **DECORATED SYCAMORE CHINA CABINET ADAM STYLE**  
Upper part enclosed by two glazed doors; drawers and cupboard in lower part. Painted with medallions of figures and swags of flowers. (*Musa Bence Liggett*)

80-

*Height, 7 feet 6 inches; width, 44 inches*

[SEE ILLUSTRATION]

- 162 **CONNECTICUT OAK PANELED CHEST WITH PINE TOP**  
Front having three panels decorated with split balusters and bosses. Interior with compartment on right.

50-

*Height, 26 $\frac{3}{4}$  inches; length, 44 inches*

- 163 **CARVED MAHOGANY CHAISE LONGUE**

CHIPPENDALE STYLE

40-

Carved cabriole legs; upholstered in figured rose brocade. (*Musa Bence Liggett*)

*Length, 5 feet*

- 164 **TWO CARVED WALNUT CANE-BACK CHAIRS**

JAMES II STYLE

22<sup>50</sup>

Comprising armchair and side chair with cane seats and cane paneled backs framed with scroll and flower carving. Brocade seat cushions. (*Musa Bence Liggett*)

- 165 **VICTOR ELECTRIC VICTROLA IN WALNUT CASE**

27<sup>50</sup>

Automatic record-changing mechanism above album shelf, enclosed by shell-carved paneled doors; molded base, scroll feet. No. VE 10-50 U. (*Musa Bence Liggett*)

*Height, 50 inches; width, 48 inches*

- 166 **DECORATED SYCAMORE DRESSING TABLE**

ADAM STYLE

17<sup>50</sup>

Surmounted by a three-fold mirror and fitted with five drawers; together with a similar caned bench. (*Musa Bence Liggett*)

*Height, 5 feet 4 inches; width, 49 inches*

- 167 **DECORATED SYCAMORE CARLTON HOUSE DESK**

80-

ADAM STYLE

Kidney-shaped table desk fitted with drawers and cupboards and painted with medallion of figures and flowers. (*Musa Bence Liggett*)

*Height, 41 inches; length, 54 inches*



[NUMBER 161]

168 **CARVED OAK REFECTORY TABLE** JACOBAN STYLE

Carved frieze and bulbous supports with box stretchers.  
*Passed* (*Musa Bence Liggett*) Height, 30½ inches; length, 10 feet

169 **PAIR CARVED AND GILDED WALL MIRRORS**

ITALIAN, XVIII CENTURY

72<sup>50</sup> Molded rectangular shape with flower, leaf, and pierced scroll  
ornamentations. (*Musa Bence Liggett*)  
Height, 52 inches; width, 28 inches

170 **MAHOGANY UPHOLSTERED SOFA WITH  
ADJUSTABLE SIDES**

30- Covered in soft green diamond-patterned frieze. Square taper-  
ing legs. (*Musa Bence Liggett*)

171 **MAHOGANY UPHOLSTERED EASY CHAIR**

20- Matching the preceding. (*Musa Bence Liggett*)

172 **UPHOLSTERED EASY CHAIR**

17<sup>50</sup> *En suite* with the preceding. Covered in soft green diamond-  
patterned frieze. Loose cushion seat. Square tapering legs.  
(*Musa Bence Liggett*)

173 **OAK SILK VELVET UPHOLSTERED SOFA**

37<sup>50</sup> Upholstered in rose silk velvet with two cushions on oak base.  
(*Musa Bence Liggett*) Length, 7 feet 6 inches

174 **OAK SILK VELVET UPHOLSTERED ARMCHAIR**

12<sup>50</sup> To match the preceding. (*Musa Bence Liggett*)

175 **ITALIAN CARVED WALNUT CHEST**

27<sup>50</sup> Paneled front carved with child's-head mask mantled in draped  
swags and acanthus sprays; paneled stiles with centre rosettes  
bearing acanthus leaves; molded base with leaf carving.  
(*Musa Bence Liggett*) Height, 24 inches; length, 54 inches



176 **ELIZABETHAN CARVED OAK ARMOIRE**

ENGLISH, XVII CENTURY

40- Elaborately carved cabinet with cornice of leaf and gargoyle pattern; front divided into panels depicting figures of saints, birds, and masks, framed in guilloche leaf and nulling. The end panels are carved in interlaced rose and leaf pattern. Mounted on base with carved design similar to the cornice. The stile dividing the upper and lower cabinets is carved with the inscription *W 1698 M.* (*Musa Bence Liggett*)

*Height, 6 feet 10 inches; width, 49 inches*

177 **CARVED AND GILDED GESSO-WORK PIER GLASS**

LOUIS XV STYLE

42<sup>12</sup> Rectangular shape, the crest boldly carved with acanthus leaves; molded sides, beaded and rosetted. (*Musa Bence Liggett*)

*Height, 5 feet 4 inches; width, 33 inches*

178 **PAIR CARVED WALNUT AND GILDED BEDS**

LOUIS XVI STYLE

40- Single bed with oval paneled cane headboard and arched cane paneled footboard. (*Musa Bence Liggett*)

*Length, 6 feet 6 inches; width, 36 inches*

179 **WALNUT DRESSING TABLE AND BOUDOIR CHAIR**

LOUIS XVI STYLE

10- *En suite* with the preceding. Dressing table surmounted by carved and gilded oval mirror, and fitted with five drawers. Chair upholstered in mauve damask. (*Musa Bence Liggett*)

*Height of table, 5 feet; width, 48 inches*

180 **CARVED WALNUT ARMCHAIR AND GILDED SIDE CHAIR**

LOUIS XVI STYLE

15- *En suite* with the preceding; with cane backs and seats and loose cushions. Together with an oval occasional table with one drawer. (*Musa Bence Liggett*)

181 **PAIR CARVED WALNUT AND GILDED TABLE MIRRORS**

LOUIS XVI STYLE

15- *En suite* with the preceding. Oval-shaped and mounted on circular swivel base. (*Musa Bence Liggett*)

*Height, 23 inches*

182 WALNUT DEMI-LUNE THREE-DRAWER CHEST

LOUIS XVI STYLE

25- *En suite* with the preceding. Cane paneled doors framed in carved and gilded ovals; fitted with three drawers. Oval mirror with carved and gilded frame and swags. (*Musa Bence Liggett*)

*Height of chest: 38 inches; length, 42 inches*

*Height of mirror: 26 inches; length, 41 inches*

183 PAIR WALNUT AND BRONZE DORE BEDS

LOUIS XVI STYLE

35- Single bedstead with mitred crotch walnut panels framed in bronze doré of leaf and swag design; with box spring and mattress. (*Musa Bence Liggett*)

*Length, 6 feet 6 inches; width, 43 inches*

184 WALNUT AND BRONZE DORE SEVEN-DRAWER CHEST

LOUIS XVI STYLE

25- *En suite* with the preceding. Fitted with five long and two short drawers. (*Musa Bence Liggett*)

*Height, 58 inches; width, 38 inches*

185 WALNUT AND BRONZE DORE BUREAU LOUIS XVI STYLE

20- *En suite* with the preceding. Surmounted by arch-topped mirror. (*Musa Bence Liggett*)

*Height, 6 feet; width, 55 inches*

186 WALNUT AND BRONZE DORE WRITING DESK

LOUIS XVI STYLE

22 1/2- *En suite* with the preceding. Fitted with two drawers and boxed stationery compartments. (*Musa Bence Liggett*)

*Height, 40 inches; width, 36 inches*

187 WALNUT AND BRONZE DORE OCCASIONAL TABLE  
AND COSTUMER

LOUIS XVI STYLE

17 1/2- *En suite* with the preceding. (*Musa Bence Liggett*)

188 WALNUT AND BRONZE DORE NIGHT STAND  
SIDE CHAIR, AND ROCKER

LOUIS XVI STYLE

15- *En suite* with the preceding. Night stand fitted with drawer and cupboard; chair and rocker with rose velvet cushions. (*Musa Bence Liggett*)

189 **WALNUT AND BRONZE DORE DRESSING TABLE  
AND BENCH**

*En suite* with the preceding. Surmounted by triple-paneled adjustable mirror and fitted with three drawers. Bench with loose chintz cushion. (*Musa Bence Liggett*)

*Height, 5 feet 4 inches; width, 42 inches*

190 **STEINWAY PARLOR GRAND PIANO IN CARVED  
CREME LAQUE CASE**

LOUIS XVI STYLE

Guilloche and acanthus-paneled body on fluted tapering legs. Serial No. 150341. With bench. (*Musa Bence Liggett*)

*Length, 6 feet*

**ORIENTAL AND HOOKED RUGS**

NUMBERS 191-200

191 **AMERICAN HOOKED RUG**

Centre medallion of floral and leaf forms in soft greens, blues, and browns upon a dull beige ground surrounded by scrolled leaves and blossoms in green, lavender, and copper colors, edged with black.

*Length, 8 feet 11 inches; width, 6 feet 1 inch*

192 **AMERICAN HOOKED RUG**

Oblong beige field with floral medallion in pastel colors surrounded by scrolled leafage and black edge.

*Length, 6 feet 3 inches; width, 3 feet 6 inches*

193 **HAMADAN RUG**

Mulberry red and deep blue field occupied by pole medallion. Border with geometrical flower motive on white ground. (*Musa Bence Liggett*)

*Length, 6 feet 6 inches; width, 3 feet 7 inches*

194 **CAMEL'S HAIR RUG**

Long rug of Hamadan type with pointed medallion in white in a deep blue field with scattered flower forms. Natural camel's-hair border. (*Musa Bence Liggett*)

*Length, 11 feet 2 inches; width, 5 feet*

195 **TAUPE BROADLOOM CARPET AND RUNNER**

(*Musa Bence Liggett*)

*Size of carpet: Length, 24 feet; width, 12 feet*

*Size of runner: Length, 19 feet 6 inches; width, 3 feet*

70-

196 **KIRMAN RUG**

Mulberry red field plain except for five spaced formal flower motives. Border with flowers and vines in an ivory ground.

Needs small repair. (*Musa Bence Liggett*)

*Length, 6 feet 11 inches; width, 4 feet 1 inch*

15-

197 **THREE SMALL RUGS**

Kirman, Sehna, and Sarouk weaves. (*Musa Bence Liggett*)

17<sup>50</sup>

198 **GREEN CHENILLE CARPET AND MAUVE WILTON CARPET**

Octagonal green carpet with tasseled fringe; mauve carpet with tasseled fringe. (*Musa Bence Liggett*)

*Size of green carpet: Length, 9 feet 9 inches;  
width, 9 feet 6 inches*

*Size of mauve carpet: Length, 14 feet 6 inches;  
width, 13 feet*

35-

199 **SAROUK RUG**

Ivory field with centre medallion and corner panel in dark blue and faded rose green. (*Musa Bence Liggett*)

*Length, 5 feet; width, 3 feet 9 inches*

20-

200 **KURDISTAN RUG**

Crimson field with Herati design in soft green, blue, and white. Two borders of angular vines. (*Musa Bence Liggett*)

*Length, 6 feet 8 inches; width, 3 feet 7 inches*

17<sup>50</sup>

## DECORATIVE OBJECTS

NUMBERS 201-212

- 12 ✓  
201 **TWO PAIRS REGENCY TOLE CACHEPOTS** CIRCA 1820  
Flaring quadrangular pots, the larger pair having mythological representations on each side.
- ✓  
202 **CHINESE PAINTING ON GLASS** TAO KUANG  
Painted with tassels, vases, and fans on mirror surface; carved teakwood frame. Together with a maple mirror with painted top.
- 750  
203 **FIVE JAPANESE ORNAMENTS**  
Comprising modeled bronze lion on wood plinth, bronze tripod incense burner, bronze ovoid enamel-banded vase, small enamel and niello vase, and brass pagoda. (*Musa Bence Liggett*)
- ✓  
204 **ELEVEN CLOISONNE AND PEKING ENAMEL OBJECTS**  
Comprising nicely decorated deep bowl, three trays, three circular ash trays, three graduated cylindrical boxes, and a tiny bowl.
- 60-  
205 **COLLECTION OF ELEVEN CHINESE OBJECTS**  
Cabinet vases, snuff bottles, and a box; in jade, porcelain, lacquer, and tortoise shell. (*Musa Bence Liggett*)
- 20-  
206 **COLLECTION OF DECORATIVE OBJECTS**  
Pair porcelain busts, miniature porcelain urn, bronze elephant, two ivory elephants, marble sphinx, tortoise shell mandolin, pierced ivory and paper fan, and three small ivory figures. Twelve pieces. (*Musa Bence Liggett*)
- 20-  
207 **COLLECTION OF SEVEN ORIENTAL DECORATIVE OBJECTS**  
Three crystal glass balls on carved ivory stands, an ivory elephant, miniature teapot, *inro*, and pipe. (*Musa Bence Liggett*)

208 **GROUP OF SMOKING ACCESSORIES**

10- A mammoth Dunhill table lighter, a marine lighter, one in the form of a cocktail shaker, and six Ronsons. Together with six medallion-decorated ash trays and six matchbox holders. (*Musa Bence Liggett*) *Heights, 4 to 5 inches*

209 **K'ANG-HSI CLUB-SHAPED VASE FITTED AS A LAMP**

7<sup>50</sup> With paneled scenes of mandarin receiving guests, and *mei jên*; on blue and white diapered ground. Silk shade. (*Musa Bence Liggett*) *Height, 29½ inches*

210 **CH' IEN-LUNG BELL-SHAPED JARDINIÈRE**

5- Decorated with peony flowers and birds in brilliant reds, greens, and yellows. (*Musa Bence Liggett*) *Height, 19 inches*

211 **TWO 'BLACK HAWTHORN' JARDINIÈRES**

17<sup>50</sup> All-over decoration of flowers of the seasons and *ho-ho* birds, in brilliant red, green, and yellow. (*Musa Bence Liggett*) *Heights, 15 and 13½ inches*

212 **ITALIAN POTTERY JARDINIÈRE**

5- Gaily decorated with bird and plant forms bordered in blue. (*Musa Bence Liggett*) *Height, 11¾ inches*

1 Session # 5.911-

SECOND SESSION

NUMBERS 213-415

DECORATIVE AND TABLE GLASSWARE  
AND PORCELAINS

NUMBERS 213-258

213 SEVEN PIECES OF ETCHED AMETHYST GLASS

7 50  
Comprising pair of tall flower vases, pair of candlesticks, pair of eau de cologne bottles with crystal and brass stoppers (one bottle imperfect), and a sweetmeat bowl. (*Musa Bence Liggett*)

214 SET OF GOLD-DECORATED CRYSTAL GLASS  
STEMWARE

7 50  
Comprising eleven goblets and twelve champagne glasses. Fluted bowls with flower and scroll-embossed gold borders. (*Musa Bence Liggett*)

215 SET OF ETCHED CRYSTAL GLASS STEMWARE

12 50  
Comprising twelve cocktails, eight sherries, three goblets, fifteen sherbets, seven fruit cocktails, fifteen clarets, and six ports. (*Musa Bence Liggett*)

216 FIVE GREEN HOCK GLASSES

✓  
Decorated with floral sprays in white and green enamel heightened with gold; together with four cut glass compotes, and an amber glass ice bucket. (*Musa Bence Liggett*)

217 TWELVE ETCHED CRYSTAL GLASS BERRY DISHES

✓  
Clear glass with spray motive on rim. Together with eleven opalescent glass dessert plates. (*Musa Bence Liggett*)

*Diameters, 9½ and 8½ inches*

218 **CUT GLASS SAUCEBOAT AND UNDER DISH**

Of Waterford type, having scalloped edge and floral border.

*Length, 9½ inches*

219 **RELIEF-DECORATED OPAQUE GLASS VASE  
BY GALLÉ**

Ovocylindrical in shape, the body ranging in color from Prussian blue thinning to sky blue and cream at the top; with low relief of flowers in bloom. Signed GALLÉ. (*Musa Bence Liggett*)

*Height, 12 inches*

220 **CRYSTAL GLASS LUSTRE CANDELABRUM**

AMERICAN, CIRCA 1830

Molded glass three-light candelabrum with engraved globes, the sockets hung with cut pointed prisms, together with three festooned candelabra hung with cut prisms. Assembled.

*Heights, 16 to 28½ inches*

221 **PAIR AMETHYST GLASS HORN OF PLENTY  
FLOWER VASES**

Mounted on oblong white streaked marble bases.

*Height, 7½ inches*

222 **PAIR BRONZE GIRANDOLES WITH CRYSTAL  
GLASS PRISMS**

Frosted engraved globes and long pointed prisms; fitted for electricity.

*Height, 19½ inches*

223 **AMERICAN CRYSTAL GLASS CANDELABRUM**

CIRCA 1830

Molded cable-twist shaft rising from circular base; four curved socket branches and a centre upright hung with pointed cut prisms. Imperfect.

*Height, 25 inches*

224 **AMERICAN CRYSTAL GLASS CANDELABRUM**

CIRCA 1830

Tall molded spiral twist on square base; spiral molded shaft with flower-shaped bowl holding five candle sockets hung with long trilateral pointed prisms. Imperfect.

*Height, 32 inches*



- 225 **PAIR FOUR-LIGHT MOLDED AND CUT GLASS  
CANDELABRA** AMERICAN, CIRCA 1830  
37 10 - Vase-shaped shaft rising from petal-shaped base, hung with  
cut glass prisms; imperfect. *Height, 24 inches*
- 226 **THREE ENGLISH CRYSTAL GLASS GIRANDOLES**  
25 - Each has eight sockets elaborately hung with leaf-shaped cut  
glass drops, together with box of odd parts; imperfect. As-  
sembled. *Height, 28 inches*
- 227 **ENGLISH BRASS-MOUNTED ENGRAVED  
GLASS LANTERN**  
22 10 - Inverted bell-shaped bowl engraved with floral and leaf forms;  
suspended on chains from a slightly domed smoke screen.  
*Height, 36 inches; diameter, 14 inches*
- 228 **PAIR AMERICAN CRYSTAL GLASS CANDELABRA**  
60 - CIRCA 1830  
Circular molded petal-shaped base and a vasiform shaft sup-  
porting flower-shaped cup. Centre column has socket and four  
socket arms, hung with handsomely cut prisms. Imperfect.  
*Height, 24 inches*
- 229 **EMPIRE ONYX AND ORMOLU-MOUNTED  
MANTEL CLOCK**  
12 10 - Boxed onyx drum on rectangular base surmounted by onyx  
and ormolu urn. (*Musa Bence Liggett*) *Height, 17 inches*
- 230 **TWO MEISSEN PORCELAIN GROUPS FITTED AS LAMPS**  
30 - Youth and maiden and a figure of a woman surrounded by  
flowers; both with silk shades. (*Musa Bence Liggett*)  
*Heights, 19 inches*
- 231 **PAIR VIEUX PARIS DECORATED APPLE GREEN  
PORCELAIN VASES**  
42 10 - Baluster shape with gilded handles and foot; decorated with  
flowers in reserves. (*Musa Bence Liggett*) *Height, 13 inches*
- 232 **PAIR CARVED ALABASTER VASES**  
15 - FRENCH OR ITALIAN, XIX CENTURY  
In three parts; carved with grapevine and flowers in high  
relief. (*Musa Bence Liggett*) *Height, 22 inches*

233 PAIR CARVED ALABASTER VASE LAMPS

ITALIAN (?), CIRCA 1850

✓<sup>15</sup>- Baluster vase, carved with winged demi-female figures; fitted with lamp for two lights with pleated ivory silk shades. One slightly imperfect. (*Musa Bence Liggett*) Height, 29 inches

234 PAIR GILDED AND ENAMELED ORMOLU-MOUNTED CANDELABRA, AND PAIR CASSOLETTES

32 <sup>16</sup> Both with royal blue bodies having gilded leaf festoons; candelabra fitted for five lights, cassolettes with finials converting to *bobêches*. (*Musa Bence Liggett*)  
Heights, 15½ and 9½ inches

235 SEVRES PORCELAIN ROYAL BLUE- AND GOLD-DECORATED VASE

35- Of ovoid shape with tall flaring neck and base. Two reserves depicting pastoral scenes. Framed in gold arabesque scrolls. Ormolu acanthus and swag mounts. Domed cover with ormolu-mounted finial. (*Musa Bence Liggett*)  
Height, 42 inches

236 TWELVE CAPO DI MONTE GOLD-DECORATED ALLEGORICAL FIGURES

42 <sup>16</sup> Modeled in porcelain, surmounting circular base, each figure attired in flowing gold drapery. (*Musa Bence Liggett*)  
Approximate height, 8 inches

237 BRONZE EQUESTRIAN STATUETTE PIERRE JULE MÊNE

70- Mounted toreador. A spirited and finely executed group; signed on the old base, P. J. MÊNE, 1876. (*Musa Bence Liggett*)  
Height, 36 inches

238 BRONZE DORE AND JASPE FLEURI MARBLE CLOCK GARNITURE

TIFFANY & CO., N. Y.

45- In Louis XV style; composed of timepiece and pair of two-light candelabra, embellished with figures of nymph and amors; after Falconet and Clodion. (*Musa Bence Liggett*)  
Heights, 12 and 15 inches

239 **ORMOLU-MOUNTED WHITE MARBLE**

**CLOCK GARNITURE**

TIFFANY & CO., PARIS

✓✓-  
Comprising a beautiful Directoire style timepiece composed of two columns which flank the drum-shaped movement, *plaqué* with ormolu mounts; and pair three-light candelabra *en suite*.  
(*Musa Bence Liggett*) *Heights, 17 and 19 inches*

240 **BRONZE AND STATUARY MARBLE CLOCK GARNITURE**

LOUIS XVI STYLE

80-  
Comprising a timepiece, embellished by figures emblematic of literature, flanked by a pair of four-light candelabra, composed of figures of amors; plinths of white marble, *plaqué* with gilded bronze mounts. (*Musa Bence Liggett*)  
*Heights, 17 and 21 inches*

241 **TWO OLD DELFT PLAQUES**

10-  
Decorated in dark blue, one with peacock pattern, the other with landscape and figures; one chipped. (*Musa Bence Liggett*)  
*Diameters, 15¼ and 15½ inches*

242 **MINTON PORCELAIN TURQUOISE-BLUE  
GOLD-DECORATED FIVE-PIECE GARNITURE**

70-  
Comprising set of four candlesticks and a flower bowl, decorated in turquoise blue and gold with pink and green floral festoons. (*Musa Bence Liggett*)  
*Height of candlesticks, 11½ inches*  
*Length of bowl, 13¾ inches*

243 **TWENTY-FOUR CHAMBERLAIN PORCELAIN  
DESSERT PLATES**

35-  
Bordered in cerulean blue and gold; crest with motto *Moneo et Munio*. (*Musa Bence Liggett*) *Diameter, 8½ inches*

244 **TWELVE ROYAL DOULTON GILDED AND PAINTED  
SERVICE PLATES**

75-  
Painted with hunting scenes; signed J. PRICE; green, blue, and gold borders. (*Musa Bence Liggett*) *Diameter, 10¼ inches*

245 **FOUR MEISSEN PORCELAIN CANDLESTICKS**

10  
2  
Tall cylindrical shafts rising from pierced square base richly painted with floral forms heightened with gold. (*Musa Bence Liggett*)  
*Height, 11¼ inches*

246 **FOUR MEISSEN OBLONG AND OVAL DEEP DISHES**

Matching the preceding. (*Musa Bence Liggett*)

Lengths,  $10\frac{1}{2}$  to  $11\frac{1}{2}$  inches

22<sup>10</sup>

247 **TWENTY-FIVE MEISSEN AJOURE BREAD AND BUTTER PLATES**

Matching the preceding. (*Musa Bence Liggett*)

Diameter,  $6\frac{1}{2}$  inches

25<sup>-</sup>

248 **NINE MEISSEN DEMI-TASSE CUPS WITH TWELVE SAUCERS, AND FIFTEEN ASH TRAYS**

Matching the preceding. (*Musa Bence Liggett*)

15<sup>-</sup>

249 **TWO MEISSEN SALAD BOWLS, DRESSING BOWL AND TWO OVAL DISHES**

Matching the preceding. (*Musa Bence Liggett*)

17<sup>10</sup>

250 **TWENTY-SIX MEISSEN AJOURE DESSERT PLATES**

Matching the preceding. (*Musa Bence Liggett*)

Diameter,  $7\frac{1}{2}$  inches

25<sup>-</sup>

251 **TWELVE MEISSEN AJOURE DINNER PLATES**

Matching the preceding. (*Musa Bence Liggett*)

Diameter,  $10\frac{1}{4}$  inches

35<sup>-</sup>

252 **FOURTEEN MEISSEN AJOURE SOUP PLATES**

Matching the preceding. (*Musa Bence Liggett*)

Diameter,  $10\frac{1}{4}$  inches

17<sup>10</sup>

253 **TWELVE MEISSEN AJOURE LUNCHEON PLATES**

Matching the preceding. (*Musa Bence Liggett*)

Diameter, 9 inches

37<sup>10</sup>

254 **TWO MEISSEN CAKE PLATES, THREE DEEP DISHES AND BOWL**

Matching the preceding. (*Musa Bence Liggett*)

17<sup>10</sup>

255 **SIXTEEN MEISSEN BOUILLON CUPS**

Matching the preceding. (*Musa Bence Liggett*)

17<sup>10</sup>

256 **FIFTEEN MEISSEN AJOURE DINNER PLATES**

30 Matching the preceding. (*Musa Bence Liggett*)

*Diameter, 10¼ inches*

257 **EIGHT MEISSEN AJOURE COMPOTES**

16 Matching the preceding; various sizes. (*Musa Bence Liggett*)

258 **LENOX PORCELAIN GOLD-DECORATED  
DINNER SERVICE**

12 ✓ Comprising nineteen dinner plates, seven luncheon plates, eight salad plates, twenty dessert plates, eight bread and butter plates, eight small plates, eleven soup plates, eight cream soups and saucers, eight bouillon cups and saucers, seven cups and saucers, twelve bouillon cups with sterling silver holders and plates by Tiffany and Co. Some pieces chipped. Monogrammed. (*Musa Bence Liggett*)

**GEORGIAN SILVER, INCLUDING GILDED SILVER**

**BY PAUL STORR AND BENJAMIN SMITH**

**FLATWARE AND SHEFFIELD PLATE**

NUMBERS 259-310

259 **SILVER-PLATED THREE-PIECE TEA SERVICE**

10 REED & BARTON

22 ✓ Comprising urn, creamer, and sugar. Plain bodies chased with leaf and fern motives, scrolled feet with satyr-head masks. (*Musa Bence Liggett*)

*Heights, 8½, 7¼, and 15½ inches*

260 **IRISH SILVER GRAVY SPOON**

DUBLIN, 1775

20 ✓ Pointed oval bowl with strainer; handle with crest. Together with an English silver serving spoon by William Bell (?), London, 1814. Initialed. *Lengths, 12½ and 12 inches*

261 **SIX GEORGE III SMALL TRAYS AND A MATCH BOX**

10 ✓ JOHN WAKELIN AND WILLIAM TAYLOR, LONDON, 1794-5;

2 ✓ GEORGE SMITH, LONDON, 1813-4

Rectangular trays, crested; box with hinged lid having engraved coat of arms. (*Musa Bence Liggett*)

*Length of tray, 4½ inches; of box, 3 inches*

262 **GEORGE III SILVER CRUET**

ROBERT AND DAVID HENNELL, LONDON, CIRCA 1797

Simply molded frame on four scroll feet, containing four cut glass condiment bottles with silver tops. Lacks four bottles.

Height, 9½ inches

40-

263 **GEORGE III SHEFFIELD PLATE TEA URN** CIRCA 1800

Engraved globose bowl with mask and ring handles; cover with ivory finial; on square molded base with ball feet.

Height, 16 inches

70-

[SEE ILLUSTRATION ON PAGE 61]

264 **TWELVE FRUIT KNIVES, TWELVE FORKS  
SIX STERLING SILVER FORKS, AND SIX TEASPOONS**

The former with green bone handles. Together with twelve pearl-handled fruit knives and nine butter knives to match. About 57 pieces. (*Musa Bence Liggett*)

22<sup>ro</sup>

265 **GEORGIAN SHEFFIELD PLATED CENTRE PIECE**

Egg-shaped bowl with gadrooned edge, supported by a four-legged stand ornamented with strapwork and terminating in paw feet.

Height, 9½ inches

35-

266 **FRENCH GILDED SILVER SMALL COFFEE POT**

Pear-shaped body *repoussé* with floral garlands; three scroll feet, straight side handle. Hinged cover with rose finial.

(*Musa Bence Liggett*)

22<sup>ro</sup>

267 **EIGHT SILVER PLACE CARD HOLDERS**

Enameled with game birds in natural setting. In two cases.

(*Musa Bence Liggett*)

60-

268 **TWELVE STERLING SILVER FISH KNIVES AND FORKS**

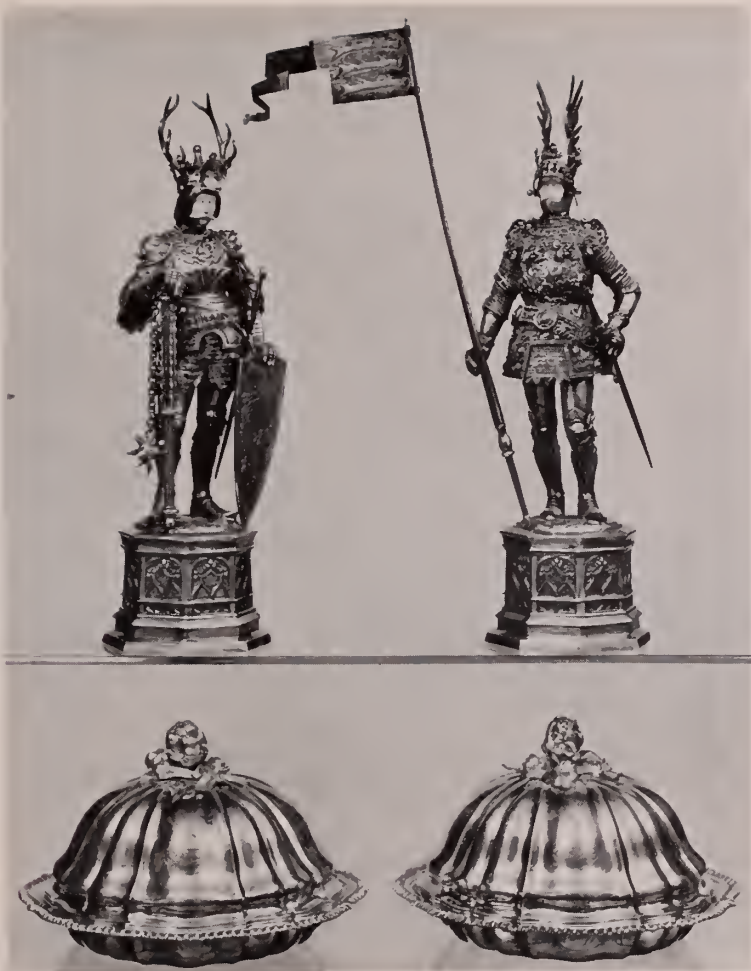
Monogrammed. (*Musa Bence Liggett*)

17<sup>ro</sup>

269 **TWELVE STERLING SILVER SALAD FORKS**

Matching the preceding. (*Musa Bence Liggett*)

17<sup>ro</sup>



[NUMBERS 270 AND 271]

270 PAIR NUREMBERG GILDED SILVER STATUETTES

190 Figures of sixteenth century warriors in full armor, the silver being *repoussé* faithfully to show ventail and visor of helmets, chain mail shirts beneath the breast- and backplates. One armed with a hand-and-a-half sword, the other resting one gauntleted hand on a shield while with the other he holds a holy-water sprinkler. Octagonal plinths. Total weight, approximately 100 ounces. (*Musa Bence Liggett*)

[SEE ILLUSTRATION]

- 271 **PAIR GEORGE III GILDED SILVER VEGETABLE DISHES AND COVERS BY PAUL STORR** LONDON, 1820  
Gadrooned piecrust borders, the covers melon-shaped and serrated, topped by highly *repoussé* artichoke finials by Robert Garrard, London, 1837. Fully marked. Crested. Total weight, approximately 138 ounces. (*Musa Bence Liggett*)  
Height, 6½ inches

[SEE ILLUSTRATION ON PRECEDING PAGE]

- 272 **GEORGE III GILDED SILVER COVERED PITCHER**  
JOHN EDWARDS, LONDON, 1802-3  
85 Greco-Roman shape, the body *repoussé* with scrolls and floral forms centring two cartouches; hinged cover with shell thumb-piece, acanthus leaf-mounted scroll handle. Crested. Weight, approximately 44 ounces. (*Musa Bence Liggett*)  
Height, 9¾ inches

- 273 **SHEFFIELD PLATED OVAL TUREEN WITH REVOLVING COVER**  
32 50 Egg-shaped bowl on strapwork-decorated frame and three claw feet. With two liners, one pierced. Length, 15 inches

- 274 **FOUR STERLING SILVER MOUNTED PLACE CARD HOLDERS**  
25 Royal Worcester porcelain medallions painted with game birds; together with a set of six tortoise shell silver-mounted place card holders inset with game birds in silver. With case. (*Musa Bence Liggett*)

- 275 **GEORGE III SILVER CRUET** LONDON, 1770  
55 Stand with pierced gallery and three claw and ball feet; five cut glass condiment bottles of Waterford type, with silver tops. Height, 8½ inches

- 276 **GEORGIAN SHEFFIELD PLATED TWO-HANDLED TRAY**  
55 Centre engraved with scrolled medallion; gadrooned border and loop handles with shell and scroll motives. Length, 29 inches





TEA AND COFFEE SERVICE: NUMBER 277

TEA TRAY: NUMBER 278

277 GEORGE III REPOUSSE GILDED SILVER TEA AND COFFEE SERVICE

ROBERT HENNELL, JOHN BRIDGE, JOSEPH CRADDOCK AND

WILLIAM REID, JOHN ANGELL, AND OTHERS, LONDON, 1816-30

Comprising teapot, coffee pot, sugar, creamer, and hot water kettle on stand, the latter being richly *repoussé* with rococo scrolls, clusters of flowers and fruits, surrounding playful *amorini*; hinged on *ajouré* tripod stand with skirt of leaves and with leaf feet. Swivel handle. Fitted with spirit lamp. The other pieces are *en suite*, each standing on four scroll feet. Crested. Total weight, approximately 188 ounces. (*Musa Bence Liggett*)

Heights, 4 to 12 inches

[SEE ILLUSTRATION OF PART]

278 **GEORGE III GILDED SILVER TEA TRAY**

PHILIP RUNDELL, LONDON, 1820-1

270  
The chasing, which seems to be contemporary, is formed of several shell cartouches mantled in cymas forming an enclosure for the engraved coat of arms. The marli is rich with *haut relief* of straggling vine bearing bunches of grapes, the leaves showing hovering bees. Scalloped edge formed of separate cyma scrolls separated by conchiform shell medallions. Four shell feet. Weight, about 196 ounces. (*Musa Bence Liggett*)

Diameter, 24½ inches

[SEE ILLUSTRATION ON PRECEDING PAGE]

279 **SET OF ELEVEN STERLING SILVER DINNER KNIVES AND ELEVEN FORKS**

TIFFANY & CO., NEW YORK

20  
Coffin-shaped handles daintily engraved with floral sprays. Knives with steel blades. Monogrammed. (*Musa Bence Liggett*)

280 **TWELVE STERLING SILVER TABLE ARTICLES**

12 10  
TIFFANY & CO., NEW YORK

Comprising ladles and relish forks. Matching the preceding. (*Musa Bence Liggett*)

281 **TWELVE STERLING SILVER FISH KNIVES**

10  
TIFFANY & CO., NEW YORK

Matching the preceding. (*Musa Bence Liggett*)

282 **SET OF TWELVE STERLING SILVER BUTTER KNIVES AND TWELVE FRUIT KNIVES WITH STEEL BLADES**

15  
TIFFANY & CO., NEW YORK

Matching the preceding. (*Musa Bence Liggett*)

283 **STERLING SILVER CARVING KNIFE, FORK, AND STEEL**

15  
TIFFANY & CO., NEW YORK

Matching the preceding. (*Musa Bence Liggett*)

284 **TWELVE STERLING SILVER SOUP SPOONS AND TWELVE BOUILLON SPOONS**

17 10  
TIFFANY & CO., NEW YORK

Matching the preceding. (*Musa Bence Liggett*)

285 **TEN STERLING SILVER SERVERS AND TWO FORKS**

27 10  
TIFFANY & CO., NEW YORK

Matching the preceding. (*Musa Bence Liggett*)

286 **COLLECTION OF STERLING SILVER SPOONS**

TIFFANY & CO., NEW YORK

10  
2 Comprising twelve ice tea spoons, eleven demi-tasse spoons, and three serving spoons. Matching the preceding. (*Musa Bence Liggett*)

287 **TWELVE STERLING SILVER TEASPOONS**

10  
7 **AND ELEVEN ORANGE SPOONS** TIFFANY & CO., NEW YORK

Matching the preceding. (*Musa Bence Liggett*)

288 **TWENTY-TWO STERLING SILVER TEASPOONS**

10  
7 TIFFANY & CO., NEW YORK

Matching the preceding. (*Musa Bence Liggett*)

289 **TWELVE STERLING SILVER SALAD FORKS AND**

25- **TWELVE ICE CREAM FORKS** TIFFANY & CO., NEW YORK

Matching the preceding. (*Musa Bence Liggett*)

290 **TWELVE STERLING SILVER SHELL FISH FORKS**

15- TIFFANY & CO., NEW YORK

Matching the preceding. (*Musa Bence Liggett*)

291 **TWELVE STERLING SILVER LUNCHEON KNIVES  
AND ELEVEN FORKS**

15- TIFFANY & CO., NEW YORK

Matching the preceding. (*Musa Bence Liggett*)

292 **TWELVE STERLING SILVER DESSERT SPOONS AND**

2 10 **TWELVE DESSERT FORKS** TIFFANY & CO., NEW YORK

Matching the preceding. (*Musa Bence Liggett*)

293 **TWELVE STERLING SILVER DEMI-TASSE CUPS  
AND TWELVE SAUCERS**

30- TIFFANY & CO., NEW YORK

With Lenox porcelain liners. Matching the preceding. (*Musa Bence Liggett*)

294 **PAIR GEORGE III GILDED SILVER WINE COOLERS  
BY BENJAMIN SMITH**

440- LONDON, 1826-7

The bodies are undulated and bulbous under the collar, the protrusions having relief of nosegays, surrounding a highly *repoussé* coat of arms at each side. The ground is diapered and bears four-leaf clovers in panels separated by swelled scrolls bearing blood roses at the base, with a profusion of swirled leaves. Acanthus leaf handles. Total weight, approximately 304 ounces. (*Musa Bence Liggett*) Height, 10¾ inches

[SEE ILLUSTRATION ON FOLLOWING PAGE]



[294]

[295]

[294]

295 **MAGNIFICENT GILDED SILVER CENTREPIECE**

BY PAUL STORR

LONDON, 1815-6

*Ajouré* basket, the border of which is composed of realistic berries and leaves, supported on the heads of three female figures in togas and sandals, holding crossed staffs. They stand on a trefoil platform which is *repoussé* with anthemion above two cockbeaded borders; the three imbricated dolphin-form supports are separated by floral and fruit pendants. Marked on base. Weight, approximately 264 ounces. (*Musa Bence Liggett*)

Height, 18 inches

[SEE ILLUSTRATION]

296 **SET OF TWELVE GEORGE III GILDED SILVER KNIVES AND FORKS**

MAKER UNKNOWN, SHEFFIELD, CIRCA 1840

Handles ornamented with scrolled leaf forms; crested. In mahogany case with brass plate engraved with crest. (*Musa Bence Liggett*)

297 **PAIR GEORGE III SILVER CHAMBERSTICKS AND SNUFFERS**

WILLIAM SIMMONS, LONDON, 1807-8

Gadrooned and shell-decorated edge; scrolled handle with acanthus leaf thumbpiece. Engraved coat of arms.

Height, 3 inches

298 ENGLISH SILVER-PLATED TABLE GARNITURE

ADAM STYLE

70- Lyre-shaped epergne supporting five blue glass sweetmeat dishes, candelabra similar in style, having three lights each and molded oval base. *Heights, 17 and 11½ inches*

299 TWELVE GILDED SILVER GOBLETS

cut Body with paneled banding of leaf swirls, circular molded base with inner border of rosettes separating festoons. (*Musa Bence Liggett*) *Height, 6 inches*

300 PAIR ENGLISH GILDED SILVER CIRCULAR SALVERS

cut Centre engraved with coat of arms, *ajouré* border of flowers beneath *bocage*; four paw feet. (*Musa Bence Liggett*) *Diameter, 13½ inches*

301 PAIR GEORGE III GILDED SILVER COMPOTES

BY PAUL STORR

LONDON, 1815-6

cut Shallow reservoirs, the serrated edge being *repoussé* with acanthus leaves mantling a shell medallion; tapered socles flaring to base with similar border. Bases of somewhat later date. Crested. (*Musa Bence Liggett*) *Diameter, 10¼ inches*

302 TWELVE GEORGE III GILDED SILVER DINNER PLATES

cut Gadroon-molded edge with shell motives; engraved with a coat of arms. (*Musa Bence Liggett*) *Diameter, 10¾ inches*

303 TWELVE GEORGE III GILDED SILVER SOUP PLATES

cut Matching the preceding. (*Musa Bence Liggett*)

*Diameter, 9½ inches*

304 TWELVE GEORGE III GILDED SILVER SALAD PLATES

cut Matching the preceding. (*Musa Bence Liggett*)

*Diameter, 9½ inches*

305 TWELVE GEORGE III GILDED SILVER BREAD AND BUTTER PLATES

cut Matching the preceding. (*Musa Bence Liggett*)

*Diameter, 6½ inches*



[NUMBER 306]

306 PAIR REPOUSSE GILDED SILVER CANDELABRA  
BY PAUL STORR

LONDON, 1813-4

580

The three branches, formed of juxtaposed reversed cymas with acanthus-leaf mounts, support urn-shaped *bobêches* above leaf-swirled wax pans. Shaft *repoussé* with *adossé* dolphin forms among seaweed and shells, garland of flowers beneath; serrated base of scrolls, leaves, shells, lion-mask and chimerical heads. Fully marked. Total weight, approximately 484 ounces. (*Musa Bence Liggett*) Height, 22½ inches

[SEE ILLUSTRATION OF ONE]

- 100- 307 **TWELVE STERLING SILVER OCTAGONAL  
DINNER PLATES** TIFFANY & CO., NEW YORK  
Richly engraved borders of flower festoons. Monogrammed.  
(*Musa Bence Liggett*) *Diameter, 11½ inches*

- 70- 308 **TWELVE STERLING SILVER OCTAGONAL  
BREAD AND BUTTER PLATES** TIFFANY & CO., NEW YORK  
Matching the preceding. (*Musa Bence Liggett*)  
*Diameter, 6½ inches*

- 800- 309 **SET OF GEORGE III GILDED SILVER FLATWARE**  
WILLIAM CHAWNER AND OTHERS, LONDON, 1821-50  
Comprising eighteen dinner forks, eighteen luncheon forks,  
eighteen soup spoons, eighteen dessert spoons, two gravy  
spoons, two servers, twenty-four teaspoons, and one punch  
ladle, by William Chawner; eighteen dinner knives and one  
carving knife and fork by George Adams; twelve luncheon  
knives by John Edwards. Decorated with strapwork and shell  
forms, crested. In contemporary mahogany brass-bound case  
with brass crested plate inscribed *September, 1821*. (*Musa  
Bence Liggett*)

- 900- 310 **MASSIVE GEORGE III GILDED SILVER CENTREPIECE  
BY PAUL STORR** PAUL STORR, LONDON, 1808-9  
Oval body, each side *plaqué* with *haut relief* of sixteenth cen-  
tury figures of equestrians, warriors, clerics, shepherds, and  
peasants, beneath which the body is gadrooned over a boldly  
scrolled and shell-mounted apron bearing mask-head medal-  
lions at the sides which volute into boldly scrolled feet; large  
handles of molded reversed scrolls mounted with acanthus  
leaves. Weight, about 600 oz. (*Musa Bence Liggett*)  
*Length, 36½ inches*

## OIL PAINTINGS

NUMBERS 311-318

311 **THE SPOOL**

B. NEUVILLE, FRENCH: XIX CENTURY

A golden-colored spool of thread has attracted the attention of a puppy and three kittens. Signed at bottom.

12 <sup>10</sup>

*Height, 21½ inches; length, 25½ inches*

312 **FLOWER-FILLED VASE**

CONTEMPORARY AMERICAN

Globular pottery urn arranged with naturalistically-colored midsummer garden flowers against a brown complementary background. Brown and gold gesso frame.

15 -

*Height, 30 inches; width, 24 inches*

313 **PORTRAIT OF THE PRINCE DE CONDE**

SIMON VERELST, ANGLO-FLEMISH, 1637-1710

The prince, seated at three-quarter length, is dressed in a richly brocaded mantle lined with green, wearing lace jabot and sleeves protruding from fur cuffs. He is shown with the symbols of all the arts and sciences against a columnar background with exquisite details of architecture, sculpture, and flowers showing at the right and left. In a fine carved and gilded frame.

45 -

*Height, 40 inches; width, 32 inches*

Simon Verelst has become famous through Walpole's description of his great vanity. He called himself "The God of Flowers" and "The King of Painters".

[SEE ILLUSTRATION]

314 **PORTRAIT BELIEVED TO BE OF JOHN MILTON**

SIR PETER LELY, ENGLISH: 1618-1680

Half-length painting of a divine with white collar and skull cap over long curling hair. In an oval simulating marble carved with fruit festoons.

32 ✓

*Height, 30 inches; width, 25 inches*





[NUMBER 313]



[NUMBER 315]

315 **FRANCES WHITMORE, LADY MIDDLETON**

SIR GODFREY KNELLER, ENGLISH: 1646-1723

300-

Seated, nearly full-length portrait; her head, crowned by softly curling auburn hair, is turned three-quarters to the onlooker. She wears a cherry-colored frock with scarlet cloak and a festooned necklace of large pearls. Background of a curtain at left and a flower-filled vase at right. In a carved and gilded frame. *Height, 49 $\frac{1}{4}$  inches; width, 40 $\frac{1}{2}$  inches*

[SEE ILLUSTRATION]



[NUMBER 316]

316 LADY ANNE CAVENDISH, COUNTESS OF EXETER

SIR PETER LELY, ENGLISH: 1618-1680

485- Seated at three-quarter length, she is dressed in ample orange-colored robes with a mantle of blue; her face, crowned by golden locks, is turned toward the onlooker. At the left is a glimpse of a landscape. In a very fine carved William and Mary frame.

*Height, 49 $\frac{1}{4}$  inches; width, 40 inches*

[SEE ILLUSTRATION]

317 ANNE, MARCHIONESS OF WHARTON

SIR PETER LELY, ENGLISH: 1618-1680

350- Seated at three-quarter length, the young lady, an ancestor of the distinguished Philadelphia family, is dressed in aubergine-colored flowing robes with a mantle of scarlet, against an architectural background. At her right, on a clipped tree rising from a stone jar, is perched a brilliant colored macaw. In a carved and gilded frame.

*Height, 42½ inches; width, 35 inches*

318 FOUR COLORED AQUATINTS

T. SUTHERLAND, AFTER HENRY ALKEN

180- Fox Hunting. Nice impressions, with good margins. Published by Thomas McLean, 26 Haymarket, London, 1824. Slightly foxed. In molded mahogany and gilded frames. (*Musa Bence Liggett*)

Purchased from Arthur Ackermann & Sons.

AMERICAN, ENGLISH, AND CONTINENTAL  
FURNITURE OF THE EIGHTEENTH  
AND NINETEENTH CENTURIES

NUMBERS 319-394

319 BRONZE FIREPLACE GARNITURE LOUIS XVI STYLE

65- Comprising log rest with urn and pineapple finials on finely chiseled frieze, fender with pineapple finials on pierced frieze of interlaced design, and three-paneled fire screen with chased floral and swag ornamentation. (*Musa Bence Liggett*)

*Length of fender, 5 feet*

320 PAIR BRONZE ANDIRONS

35- Cast as male and female figures standing upright on cartouche and lion-shaped bases. Tripod lion's feet. Together with bronze-mounted fire fork. (*Musa Bence Liggett*)

*Height, 47 inches*

40-  
321 **PAIR WROUGHT IRON AND BRASS LARGE ANDIRONS**  
With cup-shaped finials, adjustable candle arms supporting a scroll tripod base. (*Musa Bence Liggett*) *Height, 38 inches*

30-  
322 **PAIR SILVERED BRASS ANDIRONS**      LOUIS XIV STYLE  
Pierced and chased urn-shaped standards with finials of fruit and cherub design; on medallioned square plinths. Scrolled wrought iron feet enriched with scrolled and pierced apron, and cast griffins. Together with poker. (*Musa Bence Liggett*)  
*Height of andirons, 30 inches*

90-  
323 **AMERICAN LARGE HOOKED RUG**  
Oval centre medallion occupied with floral forms surrounded by floral and scalloped borders in blues, reds, and yellows, upon a tan ground. *Length, 10 feet 2 inches; width, 8 feet*

J-  
324 **AMERICAN HOOKED RUG**  
Oval centre reserve with floral medallion in pastel colors upon a beige field surrounded by a floral meander on a black ground.  
*Length, 8 feet; width, 5 feet*

J-  
325 **AMERICAN HOOKED RUG**  
Oval beige centre containing a floral medallion in brilliant colors. Surrounded by black border containing leaf and floral forms.  
*Length, 8 feet 11 inches; width, 6 feet*

0-  
326 **PAIR ADAM PAINTED AND DECORATED POLE SCREENS**  
Slender shaft rising from circular-domed base with shield-shaped screen. Painted blue-green and decorated with medallion containing basket of flowers in pinks, yellows, and greens.  
*Height, 46 inches; width, 11½ inches*

J-  
327 **CHIPPENDALE MAHOGANY BROCADE UPHOLSTERED ARMCHAIR**  
Square back, padded arm rests with curved supports; square molded legs and stretchers. Covered in claret brocade.

328 SHERATON MAHOGANY DROP-LEAF TABLE

AMERICAN, XVIII CENTURY

35- Finely figured mahogany top with shaped drop leaves; slender turned and reeded legs. Legs restored.

*Height, 29 $\frac{1}{4}$  inches; length extended, 44 $\frac{3}{4}$  inches*

329 SHERATON MAHOGANY CHEST OF DRAWERS

37 <sup>50</sup>- Straight front with four drawers and oval 'Constitution' brasses; shaped apron running into bracket feet.

*Height, 44 inches; length, 44 $\frac{3}{4}$  inches*

330 HEPPLEWHITE INLAID MAHOGANY

PEMBROKE TABLE

ENGLISH, CIRCA 1790

55- Top with cross-banded edge, drawer and blind in ends; slender tapering legs outlined in satinwood stringing.

*Height, 29 inches; length, 38 inches*

[SEE ILLUSTRATION]

331 CHIPPENDALE MAHOGANY CHEST OF DRAWERS

AMERICAN, XVIII CENTURY

27 <sup>50</sup>- Rectangular dresser with four drawers having glass knobs; bracket feet.

*Height, 36 $\frac{1}{2}$  inches; length, 45 $\frac{1}{2}$  inches*

332 SHERATON MAHOGANY FITTED LIQUOR STAND

ENGLISH, CIRCA 1810

55- Consisting of a small oblong chest fitted with twelve gilded flint glass bottles, two goblets, two tumblers and a measure; on turned support and four leaf-carved and grooved plain legs with brass feet. (*Musa Bence Liggett*)

*Height, 27 $\frac{1}{2}$  inches; width, 17 inches*

333 CARVED OAK COURT CUPBOARD

JACOBEBAN STYLE

12 <sup>10</sup>- The upper part fitted with three panel doors in linenfold and vine and leaf patterns. Carved balusters supporting frieze. Lower part has two large doors with carved panels. (*Musa Bence Liggett*)

*Height, 5 feet 3 inches; width, 55 inches*



[NUMBERS 263 AND 330]

334 **CARVED OAK COURT CUPBOARD** JACOBEOAN STYLE

20- The upper part has linenfold panels centring carved arched cupboard doors; bulbous forms support the carved frieze. The lower part is fitted with paneled carved doors, similar to those above. (*Musa Bence Liggett*)

*Height, 5 feet 5 inches; width, 54 inches*

335 **CHERRY TALL CHEST OF DRAWERS**

AMERICAN, XVIII CENTURY

37 50- Equipped with four long and three small drawers with small stamped brasses. Molded cornice and high bracket feet. (*Musa Bence Liggett*)

*Height, 52 inches; width, 37 inches*

336 **EMPIRE CARVED AND GILDED CONVEX MIRROR**

AMERICAN, 1800-20

50- Crest showing cornucopiae supporting a basket of fruit; pendant of floral and leaf forms.

*Height, 38 inches; diameter, 24¼ inches*

Formerly owned by the Lefferts family.

337 **AMERICAN CURLY MAPLE DESK** CIRCA 1770

70- Slant-top desk having four drawers of graduated depth with brass bail handles; pull-outs with brass knobs. The simple interior contains five small drawers and eight pigeonholes; molded base with ogee feet.

*Height, 42 inches; width, 38 inches*

338 **GILDED WALL MIRROR DECORATED WITH ALLEGORY OF THE WAR OF 1812** AMERICAN, CIRCA 1812

30- Rectangular gilded frame embellished with beaded fillets. The glass frieze depicts the figure of Liberty by a crenelated tower on which flies the Stars and Stripes, holding a laureated cup toward a flying eagle; a frigate is seen to the right.

*Height, 37 inches; width, 15½ inches*





[NUMBER 339]

339 **QUEEN ANNE PARCEL-GILDED WALNUT  
WALL MIRROR**

ENGLISH, EARLY XVIII CENTURY

Cyma-molded upright frame with arched and shaped crest embellished with a gilded medallion. Two-section beveled glass plate. A few small repairs. (*Musa Bence Liggett*)

*Height, 52 inches; width, 19½ inches*

[SEE ILLUSTRATION]

340 **HEPPLEWHITE MAHOGANY BOW-FRONT  
SMALL CHEST OF DRAWERS**

ENGLISH, CIRCA 1780

Containing two short and two long cockbeaded drawers furnished with circular brasses. Shaped skirt; French bracket feet.

*Height, 32¾ inches; length, 37 inches*

341 **CARVED AND GILDED OVERMANTEL MIRROR**

ENGLISH, CIRCA 1800

35- Molded cornice supported by half-round pillars enclosing a three-part mirror with frieze having acanthus scroll and centre medallion with swag motive.

*Height, 29¼ inches; length, 5 feet 3 inches*

342 **AMERICAN MAHOGANY SMALL BOOKCASE**

SHERATON STYLE

50- Upper section with diamond-latticed door and shaped cornice; lower section containing one drawer with oval brasses above a two-door cupboard.

*Height, 5 feet 5 inches; width, 25¼ inches*

343 **CARVED MAPLE HIGH CHEST OF DRAWERS**

NEW ENGLAND, CIRCA 1750

60- Molded cornice; the top drawer simulating five drawers, the centre carved with a sunburst. Scroll-shaped apron running into scrolled bracket feet.

*Height, 51½ inches; width, 40 inches*

344 **PAIR HEPPLEWHITE CARVED MAHOGANY SHIELD-BACK SIDE CHAIRS**

75- Open back with pierced beaker-form splat, sheaf of wheat and honeysuckle carving; straight tapering legs and squared H-stretchers.

345 **BLEACHED MAHOGANY LIQUOR CABINET**

LOUIS XVI STYLE

1750- With fall front concealing interior fitted for decanters and glasses; two drawers and two compartments. Square paneled legs. (*Musa Bence Liggett*)

*Height, 54 inches; width, 29 inches*

346 **SHERATON CROTCH MAHOGANY CHEST OF FOUR DRAWERS**

NEW JERSEY, CIRCA 1790

80- Top with satinwood stringing; containing one deep and three shallow drawers with beaded edge, fitted with oval eagle brasses. Shaped skirt terminating in French bracket feet.

*Height, 44¾ inches; length, 47½ inches*

347 **CHIPPENDALE MAHOGANY DAMASK-UPHOLSTERED  
EASY CHAIR** AMERICAN, XVIII CENTURY

80 - Frame with grooved legs and H-stretchers; upholstered in cream-colored damask. Restored.

Formerly owned by the Lefferts family.

348 **QUEEN ANNE WALNUT SCRUTOIRE ON STAND** AMERICAN, XVIII CENTURY

35 - Slant-front desk with fitted interior and drawers in front. On stand with three small drawers; valanced skirt and pad-footed cabriole legs. Some repairs. (*Musa Bence Liggett*)

*Height, 44 inches; width, 34 inches*

349 **CARVED AND GILDED MIRROR** AMERICAN, CIRCA 1820

35 - Shaped cornice with pendent spherical forms above painted gold, black, and white frieze showing a castle gateway; supported by pillars with Corinthian capitals.

*Height, 39 inches; width, 26 $\frac{3}{4}$  inches*

350 **HEPPLEWHITE MAHOGANY TWO-PART  
DINING TABLE**

50 - 2 Circular; composed of two demi-lunes which may be used as consoles. Fitted with one extra leaf.

351 **HEPPLEWHITE CARVED MAHOGANY ARMCHAIR** AMERICAN, XVIII CENTURY

85 - Curved cresting rail carved with tulip festoon; carved and pierced beaker-form splat. Curved arms resting upon grooved uprights; square tapering legs and square H-stretchers. Upholstered slip seat.

Formerly owned by the Lefferts family.

9  
0 - 352 **MAPLE DESK ON STAND** AMERICAN, CIRCA 1720

Desk with lifting slant top having butterfly hinges, enclosing a simple interior; stand with one drawer having tear-drop handles. Turned legs and square stretchers. Restored.

*Height, 31 $\frac{1}{2}$  inches; width, 29 $\frac{1}{2}$  inches*

353 **AMERICAN CARVED CURLY MAPLE  
BONNET-TOP HIGHBOY**

40-

The upper section with bonnet top; contains four long drawers of graduated depth above which are three short drawers, the centre one carved with a shell. The lower section has one long and three short drawers similarly decorated, cabriole legs, and Dutch feet; brass bail handles. Urn-shaped finials with smooth turned flames.

*Height, 6 feet 8 inches; width, 40 inches*



[NUMBER 354]

354 **PHYFE CARVED MAHOGANY RECAMIER COUCH**

AMERICAN, CIRCA 1820

140-

Rail carved with sheaves of wheat and draped swags depending from a bowknot. Seat and arm rails reeded and carved with acanthus rosettes. Fluted cornucopia-shaped legs with brass paw feet. Upholstered in black leather. *Length, 7 feet*

[SEE ILLUSTRATION]

355 **SHERATON MAHOGANY SOFA TABLE**

40-

ENGLISH, XVIII CENTURY

Rectangular table with drop leaves and two drawers at the sides; supported by pedestal and splayed legs connected by delicate turning. *Height, 27½ inches; length open, 57 inches*

- 356 **CHIPPENDALE MAHOGANY PIECRUST  
TILT-TOP TABLE** AMERICAN, XVIII CENTURY  
Tilting piecrust top supported on turned shaft and tripod  
base having carved knees and eagle-claw and ball feet.  
*Height, 27½ inches; diameter, 21¾ inches*

- 357 **HEPPLEWHITE INLAID MAHOGANY CARD TABLE**  
AMERICAN, XVIII CENTURY  
Top with crossbanded rosewood border and satinwood and  
ebony edge. Apron paneled and bordered in various fruit-  
woods. Square tapering inlaid legs with brass spade feet.  
*Height, 28¾ inches; length, 25½ inches*

- 358 **ENGLISH INLAID MAHOGANY KNEEHOLE DESK**  
Top inlaid with ebony borders; skirt with three shallow draw-  
ers. Each pedestal containing a cupboard flanked by quarter-  
round pilasters. Molded base and ogee feet.  
*Height, 33 inches; length, 52 inches*

- 359 **SHERATON CARVED AND GILDED OVERMANTEL  
MIRROR** ENGLISH, CIRCA 1820  
Molded cornice with pendent spherical forms supported by  
acanthus-carved brackets and fluted columns enclosing a  
three-part mirror beneath a gold, black, and white painted  
frieze showing castle, ship, and pastoral scenes.  
*Height, 35 inches; length, 5 feet*

360 QUEEN ANNE CARVED CURLY MAPLE HIGHBOY

NEW ENGLAND, CIRCA 1740

180- Upper section with molded cornice containing six drawers of graduated depth; the lower section with shaped apron. Cabriole legs terminating in Dutch feet. Four drawers, one carved with shell motive. Furnished with a set of solid-back brasses. *Height, 6 feet 1 inch; width, 39½ inches*

[SEE ILLUSTRATION]

361 CHIPPENDALE CARVED MAHOGANY ARMCHAIR

ENGLISH, CIRCA 1760

70- Circled and slightly canted solid back; incurvate arm supports having carved rosette. Square molded legs and square H-stretchers. Upholstered in crimson damask figured with eighteenth century hunting scenes.

362 PENNSYLVANIA DUTCH PANELED APPLEWOOD KAS

CIRCA 1740

50- Heavy molded cornice supported by paneled uprights enclosing two paneled doors beneath which is a long drawer paneled to simulate two drawers. Standing on double ball feet.

*Height, 6 feet 8 inches; width, 5 feet 10 inches*



[NUMBER 360]

363 SHERATON MAHOGANY BOW-FRONT

CHEST OF DRAWERS

AMERICAN, CIRCA 1780

55-  
Containing two short and three long drawers with beaded edge and oval brasses; shaped valance and French bracket feet.  
*Height, 39 inches; width, 37 inches*

364 CARVED AND PARCEL-GILDED SIDE TABLE

GEORGE I STYLE

Passer  
Ornamental acanthus and scroll-carved frieze concealing one large and two small silver drawers fitted with velvet-lined silver trays. Quadrangular legs carved in scroll, acanthus, and husk pattern. *Rouge de fer* shaped marble top. (*Musa Bence Liggett*)  
*Height, 37 inches; length, 8 feet*

365 CARVED AND PARCEL-GILDED SIDE TABLE

GEORGE I STYLE

Passer  
Similar to the preceding. (*Musa Bence Liggett*)  
*Height, 37 inches; length, 8 feet*

366 SHERATON MAHOGANY TWO-PEDESTAL  
DINING TABLE

55'  
The top with crossbanded satinwood border and reeded edge. The shaft vase-turned and reeded, having four spreading in-curved legs, reeded and ending in brass paw feet. One loose leaf.  
*Height, 28 inches; length, 4 feet 4½ inches, extending to 6 feet 2½ inches*



367 **THREE SHERATON DECORATED SIDE CHAIRS**

AMERICAN, CIRCA 1820

22 10  
Open backs with X splats; crest rail embellished with musical trophies in gold upon a black ground. Turned legs and stretchers; button feet. Rush seats.

368 **SHERATON MAHOGANY BREAKFAST TABLE**

60- ENGLISH, CIRCA 1800

Top with molded edge and shallow apron; supported by turned shaft and four reeded outcurved legs with brass tips.

*Height, 28½ inches; length, 52 inches*

369 **PAIR SILVER-PLATED TORCHERES FITTED FOR  
INDIRECT LIGHTING**

10  
Columnar shafts with pierced and ringed collars terminating in pierced and scrolled circular bases. Complete with apricot-colored silk shades. (*Musa Bence Liggett*)

*Height, 5 feet 3 inches*

10 370 **PAIR CARVED WALNUT CHINA CABINETS**

CHINESE CHIPPENDALE STYLE

With glazed front and sides; fretted pagoda pediment. (*Musa Bence Liggett*)

*Height, 6 feet 7 inches; width, 42 inches*



[NUMBER 371]

371 GEORGE III MAHOGANY AND PARCEL-GILDED  
WALL MIRROR

CIRCA 1760

2 / 5 -  
Scroll pediment terminating in floral forms; frame outlined with carved and gilded molding; swags of fruit and flowers at either side. *Height, 5 feet 6 inches; width, 31½ inches*

Formerly owned by the Lefferts family.

[SEE ILLUSTRATION]

372 PAIR CARVED OAK AND TAPESTRY LOVE SEATS

WILLIAM AND MARY STYLE

*Passed*  
Serpentine back, wings, and seat upholstered in figure, leaf, and floral patterned tapestry on *tête de nègre* ground. Carved and turned legs joined by molded and scrolled frontal stretchers. (*Musa Bence Liggett*) *Length, 5 feet*

373 QUEEN ANNE WALNUT SETTEE

*Passed*  
Upholstered to match the preceding. Carved valanced skirt; cabriole legs. Carved in cartouche and acanthus leaf design. Seat cushion worn. (*Musa Bence Liggett*) *Length, 42 inches*

374 PAIR CARVED OAK WING CHAIRS

*Passed*  
Upholstered to match the preceding. With cabriole legs carved with an acanthus leaf terminating in pad feet; loose cushion seat. (*Musa Bence Liggett*)

375 JACOBAN CARVED OAK INLAID COURT CUPBOARD

*30-*  
With carved lozenge panels and satinwood inlaid design of flowers and birds. Upper part dated 1665. Lower part fitted with two panel doors on either side of a central panel. (*Musa Bence Liggett*) *Height, 5 feet 9 inches; width, 5 feet 4 inches*

376 SMALL SHERATON CARVED MAHOGANY  
BOW-FRONT SMALL SOFA

*60-*  
Upholstered back; arms with curved ends resting upon vase-turned and reeded supports. Plain seat rail. Ring and vase-turned reeded legs. *Length, 5 feet 1 inch*

377 AMERICAN WALNUT HIGH CHEST ON STAND

CIRCA 1750

*110-*  
Flat molded cornice; contains five short drawers and four long ones of graduated depth beneath, furnished with a set of pierced brasses (four bails missing). The stand has a nicely valanced skirt and cabriole legs which terminate in well-formed web feet. *Height, 6 feet 2 inches; width, 42 inches*

378 AMERICAN WALNUT WING CHAIR

Nicely shaped back and arms having ball and square-turned legs terminating in Spanish feet. Turned end, centre, and front stretchers.

55-

379 ADAM PAINTED AND DECORATED FOUR-POST  
BEDSTEAD WITH CANOPY

ENGLISH, CIRCA 1780

Plain headposts and headboard. Slender turned footposts daintily painted with acanthus leaves and entwined with garlands of flowers in pinks, blues, and greens on dark cream-colored background. Canopy with medallions and festoons of matching flowers.

Passed

*Height, 7 feet 4 inches; length, 7 feet 3 inches;  
width, 51½ inches*

380 SHERATON GILDED OVERMANTEL MIRROR

ENGLISH, CIRCA 1820

Molded cornice with pendent spherical forms, supported by reeded columns and acanthus-carved capitals, enclosing a gold, black, and white painted frieze showing ship, castle, and pastoral scenes above a three-sectioned mirror.

out

*Height, 35 inches; length, 5 feet*

381 TURNED AND CARVED WALNUT CANED DAY BED

FLEMISH, CIRCA 1700

Back with scrolled crest rail, turned uprights, and caned panel. Eight Flemish scroll legs, vase- and ring-turned stretchers, and caned seat; cane in poor condition.

70-

*Length, 5 feet*



[NUMBER 382]

382 PAIR CHIPPENDALE MAHOGANY SIDE CHAIRS

NEW YORK, 1770

Back with curved crest rail, scrolled ears, and C-scroll pierced splat; seat with gadroon molding, cabriole legs terminating in well-formed claw and ball feet. Upholstered slip seat.

Formerly owned by the Lefferts family.

[SEE ILLUSTRATION]

383 PAIR CHIPPENDALE CARVED MAHOGANY SIDE CHAIRS

NEW YORK, 1770

Similar to the preceding.

Formerly owned by the Lefferts family.

- 384 **PAIR HEPPLEWHITE CARVED MAHOGANY  
SIDE CHAIRS** AMERICAN, CIRCA 1780  
 2/0- Heart-shaped back with carved openwork splat rising from a fan motive. Serpentine front seat rail; square tapering legs terminating in spade feet.  
 Formerly owned by the Lefferts family.
- 385 **ENGLISH FINELY FIGURED MAHOGANY SIDEBOARD**  
 ou Incurved centre section containing two paneled drawers flanked by two cupboards with paneled fall fronts; turned, reeded, and tapering legs.  
*Height, 37 inches; length, 6 feet 2 inches*
- 386 **AMERICAN INLAID MAHOGANY SIDEBOARD** SHERATON STYLE  
 75- Straight front, the slightly projected centre containing a long drawer above a cupboard flanked by two doors. Stiles and drawer fronts enriched with inlaid borders; turned and reeded legs. Octagonal spread-eagle brasses.  
*Height, 40 $\frac{3}{4}$  inches; length, 6 feet*
- 387 **SHERATON FIGURED MAHOGANY SIDEBOARD** ENGLISH, CIRCA 1790  
 120- Incurvate centre section with two paneled drawers flanked by cupboards with paneled fall fronts. Fitted with a set of octagonal brasses. Vase-turned and reeded legs.  
*Height, 37 inches; length, 6 feet 2 inches*
- 388 **ENGLISH OAK BAR WITH CARVED PANELS**  
 50- Back suggesting the English court cupboard, having three paneled doors enclosing cupboards beneath which is a series of small drawers and cupboards. Front of the bar is enriched with arched carved panels centring a diamond-shaped motive in sycamore and ebony.  
*Height, 5 feet 9 $\frac{1}{2}$  inches; width, 55 inches; depth, 29 $\frac{1}{2}$  inches*
- 389 **SIX CARVED MAHOGANY SHIELD-BACK CHAIRS** HEPPLEWHITE STYLE  
 135- Comprising two armchairs and four side chairs. Shield back with carved and pierced fan-shaped splat. Square tapering legs; spade feet. Seats upholstered.

390 SET OF TWELVE CARVED AND POLYCHROMED  
DINING CHAIRS

WILLIAM AND MARY STYLE

*Case*  
Crest rail pierced and carved with scrolls above a solid back flanked by chamfered rails; scrolled arm terminals, turned and blocked legs, and rococo frontal stretcher. (*Musa Bence Liggett*)

391 PHYFE CROTCH MAHOGANY SIDEBOARD

*VO-*  
Bow-shaped with shallow drawer above a recessed cupboard flanked by two bottle drawers surmounted by small drawers. Two deep cupboards beneath short drawers. Short tapering legs. Oval grape and vine patterned brasses.

*Height, 45 inches; length, 6 feet 7 inches*

392 SHERATON MAHOGANY INLAID SECRETARY

AMERICAN, 1790

*ST-*  
The upper section with shaped cornice and inlaid arched paneled glass doors; the lower part, in two sections, contains four drawers, one fitted as a desk with drop front enclosing six small drawers inlaid with satinwood and having ivory knobs. Furnished with a set of oval brasses. Shaped apron running into ogee feet.

*Height, 7 feet 8 inches; width, 42½ inches*

393 CARVED AND PARCEL-GILDED DINING TABLE

GEORGE I STYLE

*Pressed*  
Oblong top with chamfered corners supported by strapwork-carved frieze. Acanthus and scroll-carved quadrangular paneled legs terminating in acanthus-carved plinth feet, joined by molded saltire stretcher centring a carved basket of fruit. Five leaves. (*Musa Bence Liggett*)

*Height, 30½ inches; length extended, 10 feet; width, 5 feet*

394 CARVED WALNUT BONNET-TOP SECRETARY

PENNSYLVANIA, CIRCA 1750

325-  
Upper section with paneled doors and fluted pilasters enclosing a series of shelves, compartments, and small drawers; having pull-out slides for candles, urn and flame corner finials and ball-shaped centre finial. Lower section with fall front contains a secret centre compartment behind an arched door, flanked by a series of serpentine-front small drawers and cubbyholes. Beneath are four drawers of graduated depth, on either side of which are quarter-round fluted pilasters. Molded base and ogee bracket feet. Furnished with a set of brass bail handles. *Height, 8 feet; width, 43½ inches*

[SEE ILLUSTRATION]





[NUMBER 394]

**FLEMISH, BRUSSELS, AUBUSSON, AND**  

---

**OUDENAARDE TAPESTRIES; ORIENTAL RUGS**  

---

NUMBERS 395-406

**395 IMPORTANT FLEMISH TAPESTRY WITH BORDER  
BY JEAN BERAIN**

CIRCA 1690-1700

1350- THE COURT OF FLORA. In the foreground a group of nine graceful female figures draped in crimson, yellow, blue, and rose, holding baskets and garlands of flowers, accompanied by two boys who also bear baskets of flowers; the figures are grouped near an arcaded wall. In the upper right corner appears the flying figure of Mercury. The border, simulating a frame, is woven with leaf scrolls and cartouches in the colors of the main composition, in a yellow ground shading to terra cotta red. Highlighted in silk. (*Musa Bence Liggett*)

*Height, 8 feet 6 inches; length, 14 feet 4 inches*

[SEE ILLUSTRATION]



[NUMBER 395]

396 BRUSSELS SILK AND WOOL TAPESTRY WITH  
BORDER OF TROPHIES

270- In a garden are seen three nobly born children; they are attired in rose, crimson, blue, and yellow and are playing at blowing bubbles and bouncing them on their hats; to the right a Renaissance fountain and statue. Border of most unusual design woven with fantastic winged animals, musical trophies, and garden flowers on a dark ground. (*Musa Bence Liggett*)

*Height, 10 feet; width 7 feet*

[SEE ILLUSTRATION]

397 AUBUSSON TAPESTRY PANEL

180- Landscape and château with tall trees in the foreground and a group of children snaring birds. Mounted as a portiere. (*Musa Bence Liggett*)

*Height, 7 feet 6 inches; width, 7 feet 4 inches*

398 SMALL OUDENAARDE TAPESTRY

130- A youth attired as a Roman warrior and a maiden wearing flowers in her hair, plighting their troth, while two bearded figures in robes stand in the background. Border similar to that of the preceding tapestry. (*Musa Bence Liggett*)

*Height, 8 feet 2 inches; width, 46 inches*



399 **IMPORTANT KIRMAN CARPET**

1100 Mulberry red central field occupied by magnificent stellate medallion of flowers and vines in pastel and deeper colors on a soft ivory ground. Matching spandrels occupy each corner of the field. Six borders filled with rhombolio leaf and flower forms and undulating vines in the colors of the centre medallion. (*Musa Bence Liggett*)

*Length, 24 feet 8 inches; width, 18 feet*

[SEE ILLUSTRATION]



[NUMBER 399]

400 SAVALAN CARPET WITH SHAH ABBAS DESIGN

250-  
Mohammedan blue field presenting a rich bold all-over design of large floral palmettes alternated with smaller stiff floral forms and meandering leaf vines; in harmonious shades of yellow, red, green, and white. The main border with serrated leaves and peony vine on a rose ground. (*Musa Bence Liggett*)

*Length, 31 feet 6 inches; width, 17 feet*

[SEE ILLUSTRATION OF DETAIL]





[DETAIL (ABOUT ONE-HALF) OF NUMBER 400]

401 SAROUK CARPET OF IMPORTANT SIZE

725- Dark or royal field occupied by a harmonious all-over design of angular vines and stiff flower and leaf forms in beautiful shades of green, red, yellow, and lapis blue; the whole forming a floral diaper design of uncommon type. The main border filled with similar flower forms and leafy vines on a bright red ground. (*Musa Bence Liggett*)

*Length, 20 feet 6 inches; width, 14 feet 2 inches*

[SEE ILLUSTRATION OF DETAIL]



[DETAIL (ABOUT ONE-FOURTH) OF NUMBER 401]

402 AUBUSSON FLORAL CARPET

XIX CENTURY

700-

Good example; having a soft-white field relieved at the centre with a bouquet of roses and leaves in pastel colors, within an oval medallion, and framed in running sprays of cereal and leaf fronds. The border consists of a series of soft-white rectangular panels each containing a sprig of roses, in a *rose du Barry* ground. Fine quality. (*Musa Bence Liggett*)

*Length, 17 feet; width, 12 feet 6 inches*

[SEE ILLUSTRATION]



[NUMBER 402]



[NUMBER 403]

60- 403 ANTIQUE SEHNA KHILIM RUG

Dark field filled with red and yellow flowers, and green leaves in rich profusion. Yellow border with meandering vines. (*Musa Bence Liggett*)

*Length, 6 feet 6 inches; width, 4 feet 6 inches*

[SEE ILLUSTRATION]

404 **SERAPI CARPET**

125-  
Terra-cotta red field on which is superimposed a large shaped medallion of angular flowers and vines, in white, lapis blue, mulberry red, and dark blue. The main border in similar colors. (*Musa Bence Liggett*)

*Length, 12 feet 8 inches; width, 9 feet 4 inches*

405 **KIRMAN RUNNER**

85-  
Ivory white field sustaining an uncommon design of symmetrically arranged medallions and flower palmettes in rose, green, and darker shades. Three narrow floral borders. Worn in places. (*Musa Bence Liggett*)

*Length, 20 feet 4 inches; width, 3 feet 6 inches*

406 **KIRMAN MEDALLION RUG**

✓✓-  
Shaded rose field centring a circular floral medallion in ivory-white, rose pink, and other colors. Complementary floral border. (*Musa Bence Liggett*)

*Length, 9 feet 6 inches; width, 8 feet 6 inches*

**PORCELAIN, BRONZE, AND**

**OTHER DECORATIVE OBJECTS**

NUMBERS 407-415

407 **COLLECTION OF FIVE PORTRAIT MINIATURES ON  
IVORY IN GOLD AND GOLD-PLATED FRAMES**

57/10  
Depicting gentlemen and a youth attired in eighteenth and nineteenth century costumes; together with a locket and a jeweled ring with miniature portrait of a young woman. Seven pieces in all. (*Musa Bence Liggett*)

12 408 **SCULPTURED MARBLE FIGURE GROUP**

The Wrestlers; figures of two stalwart athletes struggling in combat. Repaired. (*Musa Bence Liggett*)

409 **SCULPTURED MARBLE BUST**

12 <sup>10</sup> - Bust of young woman in draped headdress and robe. Mounted on columnar pedestal of gray Ste Anne marble. (*Musa Bence Liggett*) Height of bust, 34 inches; of pedestal, 42 inches

410 **GROUP OF WORCESTER AND MINTON PORCELAIN OBJECTS**

45 - Comprising a pair of Minton flower vases with modeled figure decoration, a Worcester reeded covered jar of ovoid form, two Worcester pitchers, one porcelain bottle-shaped vase, and one florally decorated chocolate pot. (*Musa Bence Liggett*)

411 **CHINESE CARVED SOAPSTONE STATUETTE MOUNTED AS LAMP**

20 - Standing figure of a lady holding a fig. Fitted with two lights, and with silk shade. (*Musa Bence Liggett*) Height, 33 inches

412 **COLLECTION OF TWELVE PATCH BOXES**

90 - Of various shapes; in ivory, agate, *papier mâché*, enamel, and gold plated. (*Musa Bence Liggett*)

413 **BRONZE ANIMAL STATUETTE AFTER ANTON LOUIS BARYE**

750 - Walking tiger surmounting molded oblong plinth. (*Musa Bence Liggett*) Length, 17 inches

414 **THREE SILK EMBROIDERY ARMORIAL ESCUTCHEONS** SPANISH, XVIII CENTURY

10 - Executed in colored silks with legend below; mounted on crimson plush. Framed. (*Musa Bence Liggett*) Height, 18 inches; width, 13½ inches

415 **CRIMSON DAMASK REFECTORY TABLE RUNNER**

11 - With gold and velvet embroidered crest; trimmed in heavy gold galloon and fringe. Imperfect. (*Musa Bence Liggett*) Length, 13 feet 2 inches; width, 26 inches

1 Session \$ 5.911 - <sup>10</sup>  
2 " " 17860 <sup>10</sup>  
-----  
Grand Total \$ 23771 <sup>10</sup>  
94







**THE METROPOLITAN  
MUSEUM OF ART**

*Thomas J. Watson Library*

